

**xpr** Access

**xpr** Locking

**B100PADS-SA**

KIT



**xpr** Access Control Solution:  
simple, quick and cost-effective installation

# What does the B100PADS-SA-KIT include?



## ➤ B100PADS-SA

Surface mount standalone biometric reader with keypad

- 100 templates memory + 98 codes backlit keypad
- 1 integrated relay (2A 24V AC/DC)
- Programming via finger scrolling OR via keypad
- Pin code: from 1 to 8 digits set-up
- Power: 9-14 V DC
- Tricolor Status LED



## ➤ PSU12V24W 1,4 Ah

DIN Rail power supply with built-in battery

- 1 remote relay and capacitive push button
- Aluminium housing - Silver color
- Output: 1 relay (2A/24V AC)
- Relay: Pulse (1 - 60 s) or Latch mode (ON/OFF)
- Resin potted electronic
- Compatible with the standalone biometric B100 range



## ➤ IGEST 55

DIN Electric Strike

- Mounting: Flush mount
- Fail secure
- Holding Force: 3230N / 330 kgf
- Voltage: 10-24V AC/DC
- Endurance cycles test in-plant: 250000
- Operating temperature: -15°C to +40°C



## ➤ RTTS

1 relay remote and request to Exit Button

- 1 remote relay and capacitive push button
- Aluminium housing - Silver color
- Output: 1 relay (2A/24V AC)
- Relay: Pulse (1 - 60 s) or Latch mode (ON/OFF)
- Resin potted electronic
- Compatible with the standalone biometric B100 range



98 users

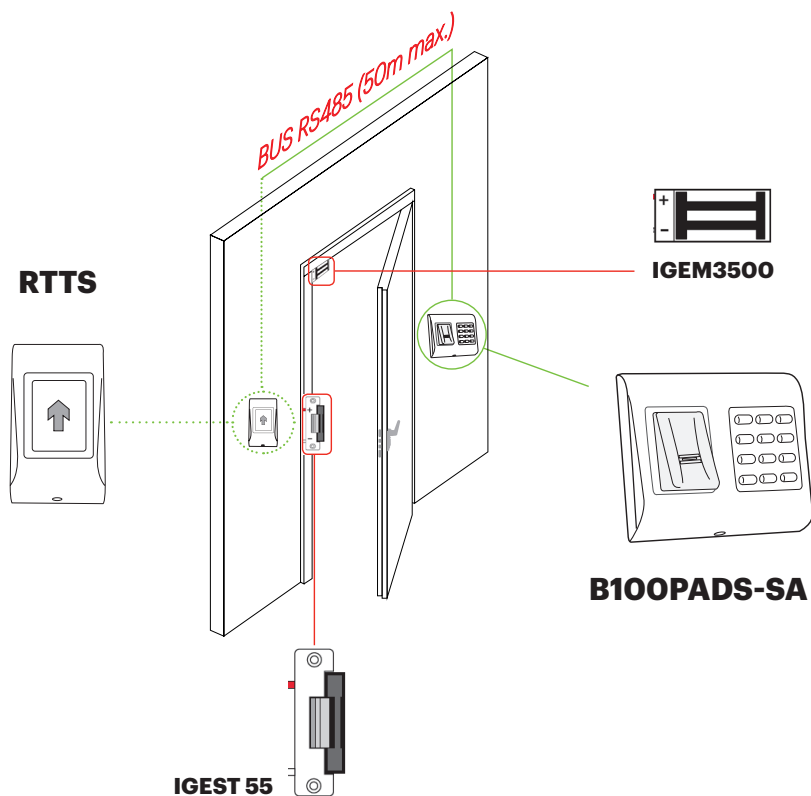


Remote relay



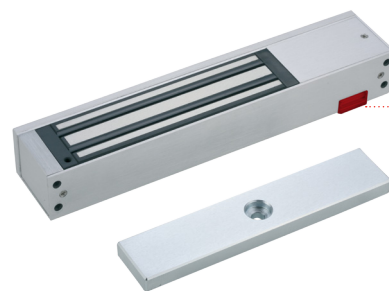
100 templates

# Installation Diagram



## Tricolor Status LED

- Green LED: access granted
- Red LED: access denied
- Orange LED: standby mode



## Mega LED

This exclusive and patented electromagnet is part of the new generation equipped with a "long - range" Mega-LED. This function allows to check the status of the door up to a large distance.

## IGEM3500

*Electromagnetic Lock with patented long range Mega-LED*

- ✓ Holding force real tested\* (+/-10%): 2430N/ 243 kgf
- ✓ Voltage: 12V DC/ 24V DC
- ✓ Current: 500/ 250 mA
- ✓ Locking monitoring: Large L shaped LED for long distance status + Relay
- ✓ Corrosion Proof: ISO 9227, ASTM B-117 90
- ✓ No magnetism residual: No need of armature plate push button to release the door
- ✓ Dimensions (LxWxH): 238 x 48 x 26 mm
- ✓ Weight: ~2 kg

\* According tests of range done in independent laboratory.



Swipe



Configuration by finger or keypad

**xpr**

www.xprgroup.com

# Why using the B100PADS-SA Kit?

XPR offers an integrated solution to resolve the most common problems for accessing an office or a building and keeping the work environment safe without compromising the security of the company.

It comes with double technology, biometry and keypad, all in one. High technology at a cost-effective price for small installations.

You won't have to look for two options: one for controlling the access and another for locking it. Everything will be interconnected by the most modern biometry and electromagnetic technology.

