

xpr Access

xpr Locking

MTPXS-MF-SA

KIT



The **xpr** Offline Access Control Solution:
simple, quick and cost-effective installation



What does the MTPXS-MF-SA KIT include?

xprAccess

> MTPX-MF-SA

The Offline Mifare proximity reader

- ABS housing - Silver color
- 1 relay (2A)
- Micro-USB connection
- Set-up via PROA MS Access management software via programming cards and PROX-USB desktop reader
- 80 Readers/Site - unlimited users and sites
- Internal clock
- 3500 events memory
- Large square LED for status visual indication
- Power: 9-14 VDC

> PROX-USB

Proximity Desktop Reader and Enrolment Unit

- ABS Housing
- USB Connection

> PBX Cards

13.56MHz Cards

- PBX2MS50 (15 units): 13.56 MHz Cards with 1K memory for users
- PBX2MS70 (2 units): 13.56 MHz Card with 4K memory for events download

> RTTS

1 remote relay and request to Exit Button

- 1 remote relay and capacitive push button
- Aluminium housing - Silver color
- Output: 1 relay (2A/24V AC)
- Relay: Pulse (1 - 60 s) or Latch mode (ON/OFF)
- Resin potted electronic
- Compatible with the standalone biometric B100 range

> IGEST 55

DIN Electric Strike

- Mounting: Flush mount
- Fail secure
- Holding Force: 3230N / 330 kgf
- Voltage: 10-24V AC/DC
- Endurance cycles test in-plant: 250000
- Operating temperature: -15°C to +40°C

xprLocking

> PSU12V24W 1,4 Ah

DIN Rail power supply with built-in battery

- DIN rail or traditional wall mount all-in-one
- 1 output - LED
- With built-in battery
- Electronic output protection, no fuse, auto-reset
- Power on: 13.6 VDC
- Power off: 12 VDC
- 24W -2A (Power on) - 1.4 Ah (Battery)
- Battery charger
- Norms: CE 89/336/EEC, EN61000-3-2, EN61000-3-3, EN61000-6-4, EN50130-4, RoHS

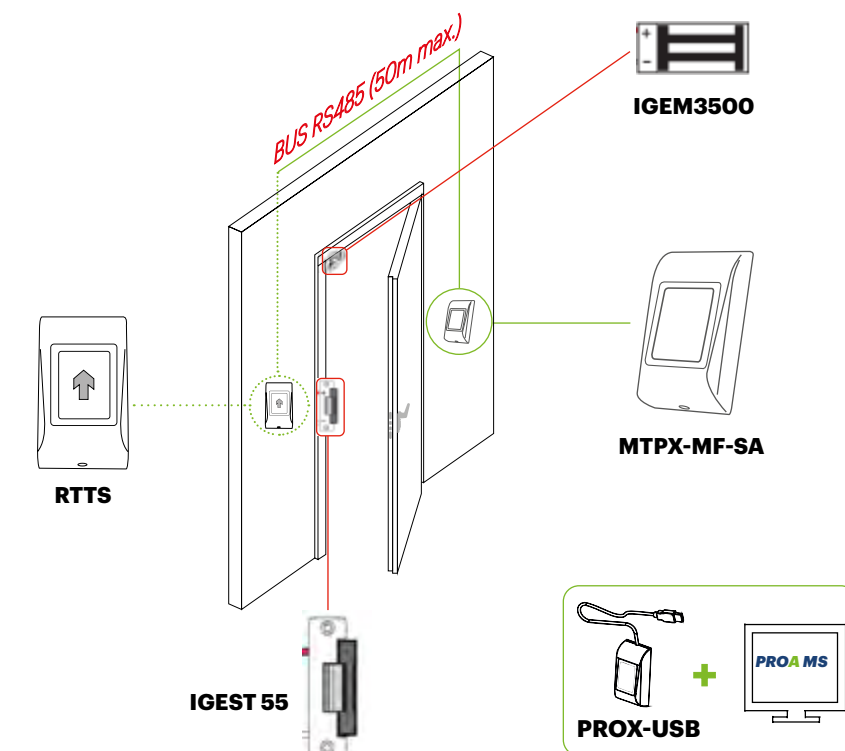
> IGEN 3500

Electromagnetic Lock with patented long range Mega-LED

- Holding force real tested* (+/-10%): 2430N/ 243 kgf
- Voltage: 12V DC/ 24V DC
- Current: 500/ 250 mA
- Locking monitoring: Large L shaped LED for long distance status + Relay
- Corrosion Proof: ISO 9227, ASTM B-117 90
- No magnetism residual: No need of armature plate push button to release the door
- Dimensions (LxWxH): 238 x 48 x 26 mm
- Weight: ~2 kg

* According tests of range done in independent laboratory.

Installation Diagram



> PROA-MS

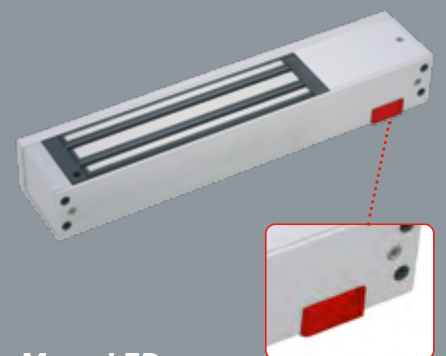
Offline Access Management Software

- Management of unlimited number of separate sites
- 80 Doors(Readers) per site, unlimited number of users per site
- Unlimited access levels
- User cards programming with PROX-USB Desktop Reader
- MS Access Database
- Reports for Events, Cards, User List, System Logs
- Configuring the reader by USB connection or by creating the Setup card
- Download reader events by USB connection or card
- Operating System: Windows 7, 8, 10
- Compatible hardware:
 - PROX-USB desktop card Reader/Writer
 - HL1000-MF Hotel lock
 - DINMTPX-MF-SA standalone reader
- Multilanguage UK, FR, IT, ES, NL, DE.



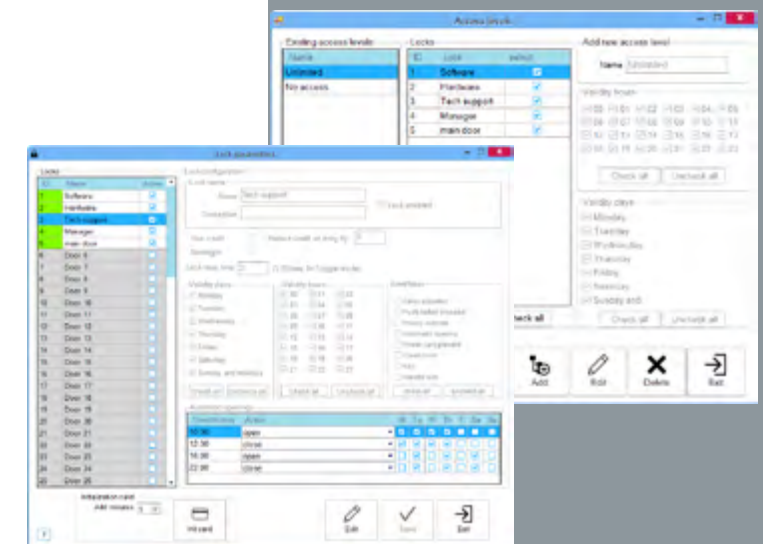
Tricolor Status LED

- Green LED: access granted
- Red LED: access denied
- Orange LED: standby mode



Mega LED

This exclusive and patented electromagnet is part of the new generation equipped with a "long - range" Mega-LED. This function allows to check the status of the door up to a large distance.



Proximity type

Free Software



Unlimited users

Configuration by cards
or micro USB



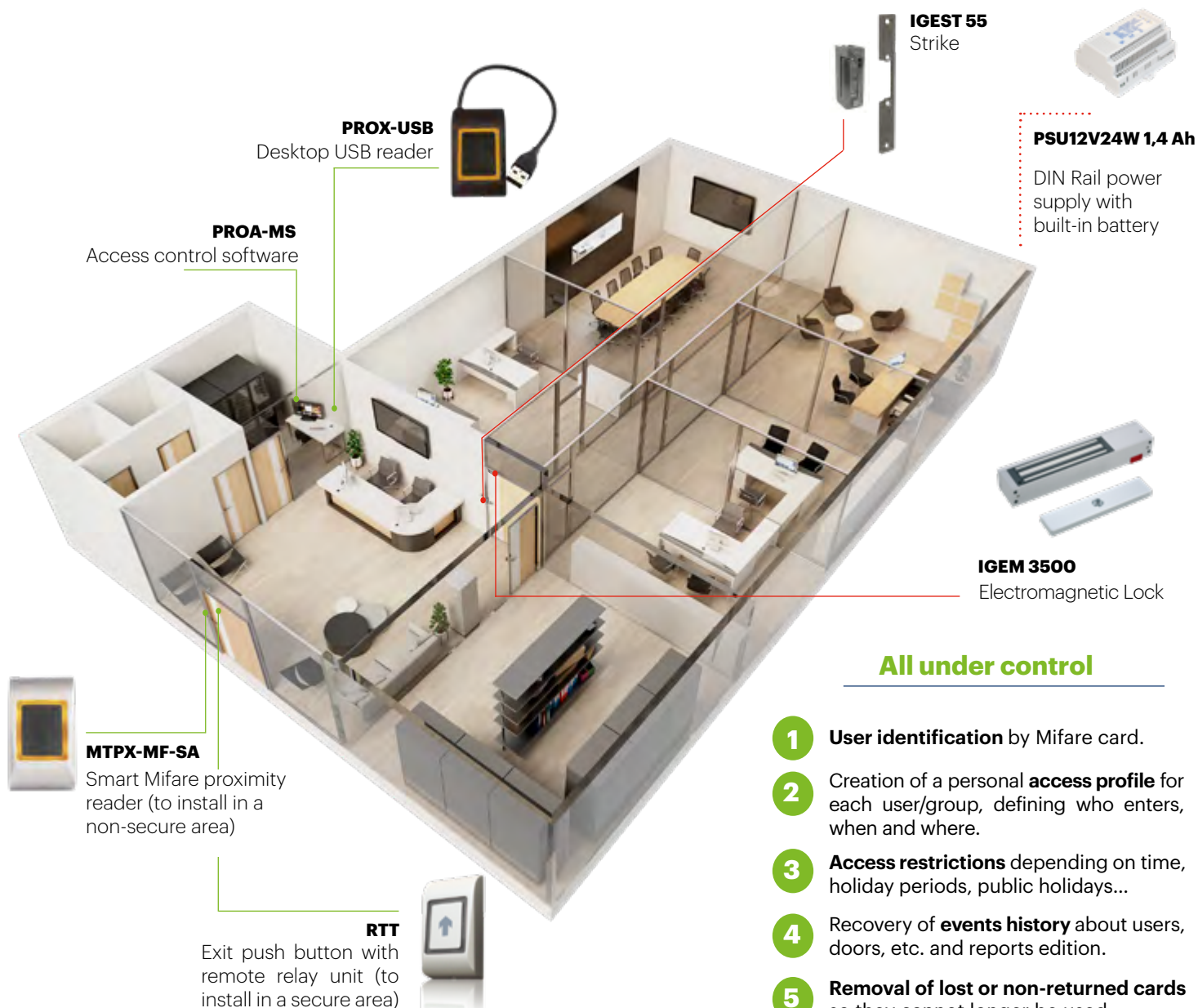
xpr

www.xprgroup.com

Why using the MTPXS-MF-SA Kit?

With this kit you will have a complete Offline access control solution plus a locking solution.

The XPR Offline Solution is perfect for sites where an online solution cannot be used, like in isolated sites, or when a network system is simply not needed. The installation is much easier as there is no need of connecting different elements to any remote controller. Everything can be done in the same place. It is also a complete user-friendly and competitive access control solution. Ideal for small companies, business centres, fitness centres, storage buildings, store chains, apartment buildings, residential areas, etc.



All under control

- 1 **User identification** by Mifare card.
- 2 Creation of a personal **access profile** for each user/group, defining who enters, when and where.
- 3 **Access restrictions** depending on time, holiday periods, public holidays...
- 4 Recovery of **events history** about users, doors, etc. and reports edition.
- 5 **Removal of lost or non-returned cards** so they cannot longer be used.
- 6 **Visitors management** with limited time access cards.

- 7 **Safe locking system.**
The electromagnet is equipped with a patented long-range Mega-LED that allows to check the status of the door from a large distance.

- 8 **Long-life energy supply system,** ensuring the correct function and the security of the place in the event of a failure in the electrical power supply.