

ACCESS

## DIN RANGE



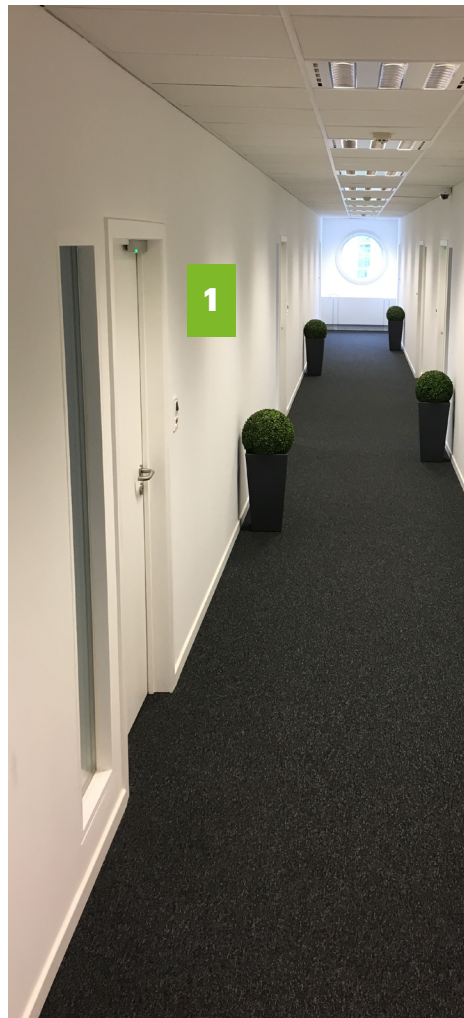
xpr<sup>TM</sup> Access



## Feel at home even at your work place.

Safe, secure and in control of your space. The DIN Range allows you to feel that, with the plus of creating a nice atmosphere wherever you install it, thanks to its elegant style.

Easy to install, it's also easy to use and to blend in the environment. The frames of the readers follow pure lines, adding simplicity to the style. They come in different colours, so you can choose which one would go better with your office, house or premises.



## Ideal for offices, homes, hotels, shops, stores, etc.

The DIN Range comprises different biometry, keypad and proximity readers and sensitive push buttons. All of them with the same aesthetic characteristic, combining style and functionality.

The main advantages of the range are:

- Easy to install
- Compact and consistent style
- Easy to adapt to your demands:
  - you can choose if you prefer biometry, keypad or proximity technology for your access readers.
  - you can choose if you want to use just one or combine two technologies (installing two readers on a double frame, selecting biometry and proximity for instance).
  - you can choose the colour of the frames.



Homes



Offices



DINB100 + DINMTPX



DINMTPX

## Aesthetic and functional design.

Classical and modern at the same time, the DIN Range is defined by pure geometry.

The lines are simple but precise, with a sophisticated finish.

Elegance and simplicity was the goal: a functional access control system had to be simple to use and to install. Even with the most advanced technology.

The result: a range beautiful and easy to use but strong and resistant at its core.



## COMMON FEATURES OF THE DIN RANGE

Frame: ABS  
 Frame model: Single, Horizontal Double, Vertical Double  
 Very versatile: Frame combinable with biometry, proximity readers and keypads  
 Colours: Silver, Charcoal or White  
 Mounting: Electrical flush back box  
 Wiring: Terminal block  
 IP rating: 40 (inside use)

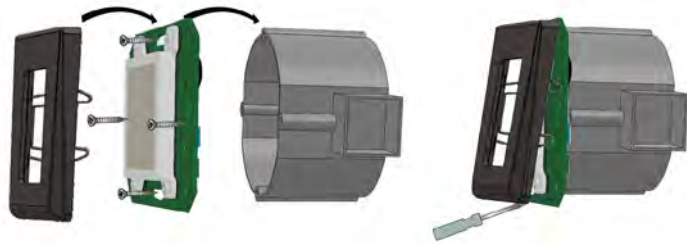
### TRICOLOR STATUS LED

For all the biometry and proximity readers of the DIN RANGE.  
 Fast and easy reading of the reader status.



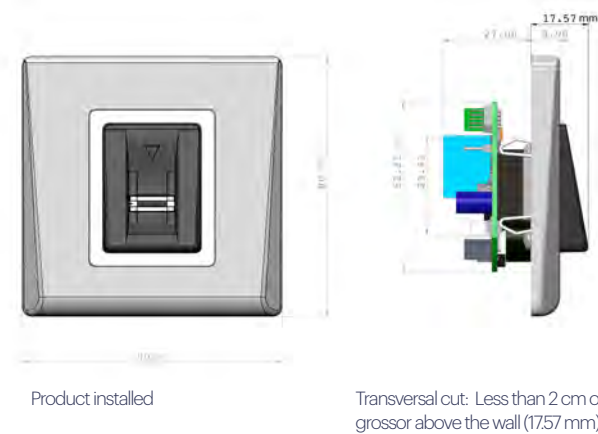
### FLUSH MOUNT READER

It cannot be easier to complete any flush mount. Each piece matches perfectly with the next, and they can be installed in any standard electrical gang box. (The mask and the electronics are sold separately.) The mask is available in UK and European standards.



### EXTRA THIN

Once installed, the reader will barely rise from the line of the wall, making it easier to find the perfect design harmony with the rest of the elements in the area where it is placed.



## Readers - DIN Range

### Biometry



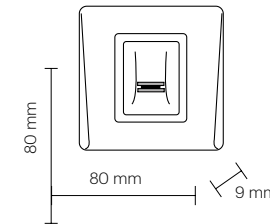
- 100
- 20°C / +50°C
- 5% → 93%
- 9-14 VDC
- 
- 40

#### DINB100-SA

##### Standalone Flush-Mount Biometric Reader

DINB100-SA is a simple standalone biometric system. The reader programming is quick and easy. It can store up to 100 finger templates (98 users and 2 for programming). It has one integrated relay output and one exit button input. If secure installation is needed, the reader can be connected to a remote relay unit in a secured area, which also plays the role of exit push button. Complete setup and programming can be done by scrolling on the sensor.

Ref: DINB100-SA-E



- 100
- 20°C / +50°C
- 5% → 93%
- 9-14 VDC
- 
- 40

#### DINB100

##### Wiegand Flush-Mount Biometric Reader

DINB100 is a single Wiegand biometric reader for access control applications that can store up to 100 finger templates. Its swipe capacitive sensor is protected by a steel coat, highly resistant to rugged environments. It has a matching time of less than 2 seconds. The reader configuration and the fingerprint enrolment can be done via PC software.

Ref: DINB100-E



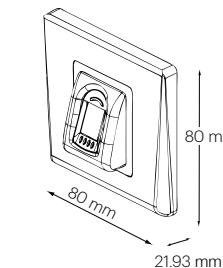
- 9500
- 20°C / +40°C
- 0% → 95%
- 12 VDC
- 
- 40

#### DINBIOC3

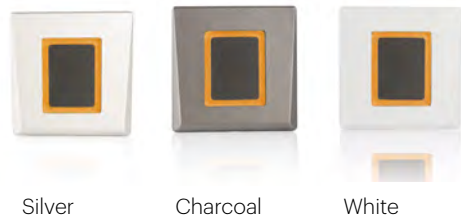
##### Wiegand Touch Sensor Biometric Reader – Flush Mount

DINBIOC3 is a single Wiegand biometric reader for access control applications with storage up to 9500 finger templates that combines technology with style as its design matches perfectly with practically any decor. The DINBIOC3 is compatible for flush mounting in specific standards electrical gang boxes.

Ref: DINBIOC3-E



### READER COLOUR CUSTOMIZATION



Silver

Charcoal

White

The DIN range frames are available in three colours by default: silver, charcoal and white.

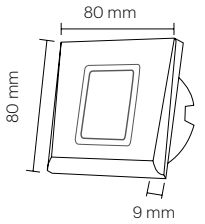
As we understand that there might be some specific requirements to match completely the style of a particular place, we offer also the option to request a different RAL colour for the frames.\*

\* To be consulted.





# Readers - DIN Range



- 7 cm
- 20°C /+50°C
- 5% →95%
- 9-14 VDC
- 40

## DINMTPX-SA

Standalone EM Reader

The DINMTPX-SA is a standalone proximity reader for up to 4000 users. It reads EM4002 compatible tags and cards. It has a relay (3A) and an internal buzzer.

Ref: DINMTPX-EH-E

- 6 cm
- 20°C /+50°C
- 5% →95%
- 12 VDC
- 40

## DINMTPX-MF-SA

Offline Mifare Reader

The DINMTPX-MF-SA is a Mifare read/write reader. It can support Mifare Classic 1K and 4K memory. It has a memory that can hold 3500 events. It has a relay (2A) and a Micro-USB connection

Ref: DINMTPX-MF-SA-E

- 6cm
- 20°C /+50°C
- 0% →95%
- 9-14 VDC
- 40

## DINMTPX-MF

Online Mifare Reader

The DINMTPX-MF is a multi-protocol reader that needs to be connected to a Host. Compatible with Wiegand protocols, it reads Mifare Classic, Ultralight and Desfire cards with a read range of 6 cm.

Ref: DINMTPX-MF-E

- 7 cm
- 20°C /+50°C
- 5% →95%
- 9-14 VDC
- 40

## DINMTPX-EH

Online EH Reader

The DINMTPX-EH is an EH multi-protocol reader that needs to be connected to a Host. It offers the possibility to select between two reading types: EM (Electro Marin) or HID 125 kHz.

Ref: DINMTPX-EH-E

Proximity



# Readers - DIN Range

Hotel/co-working/office solutions



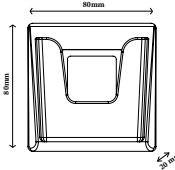
- 3 cm
- 0°C /+40°C
- 0% →95%
- 12 VDC
- 40

## DINES

Flush Mount Energy Saver

The DINES is used as an energy saver reader with smart card holder. The contactless card reader will detect the guest MIFARE card only when placed in the card holder to activate/deactivate the energy in the room. Perfect for the co-working solution.

Ref: DINES-E



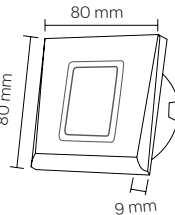
Ref: DINDC-E

- 20°C /+40°C
- 0% →95%
- 9-14 VDC
- 40

## DINDC

Flush Mount Room Status Button

The indicator works as an electronic touch sensor button allowing the guest to change the room status required (Privacy or Do Not Disturb and Clean). This accessory could be installed as a single option or combined with the DINES energy saver reader in a vertical or horizontal front plate. Perfect for the co-working solution.



Ref: DINDC-E-TICK

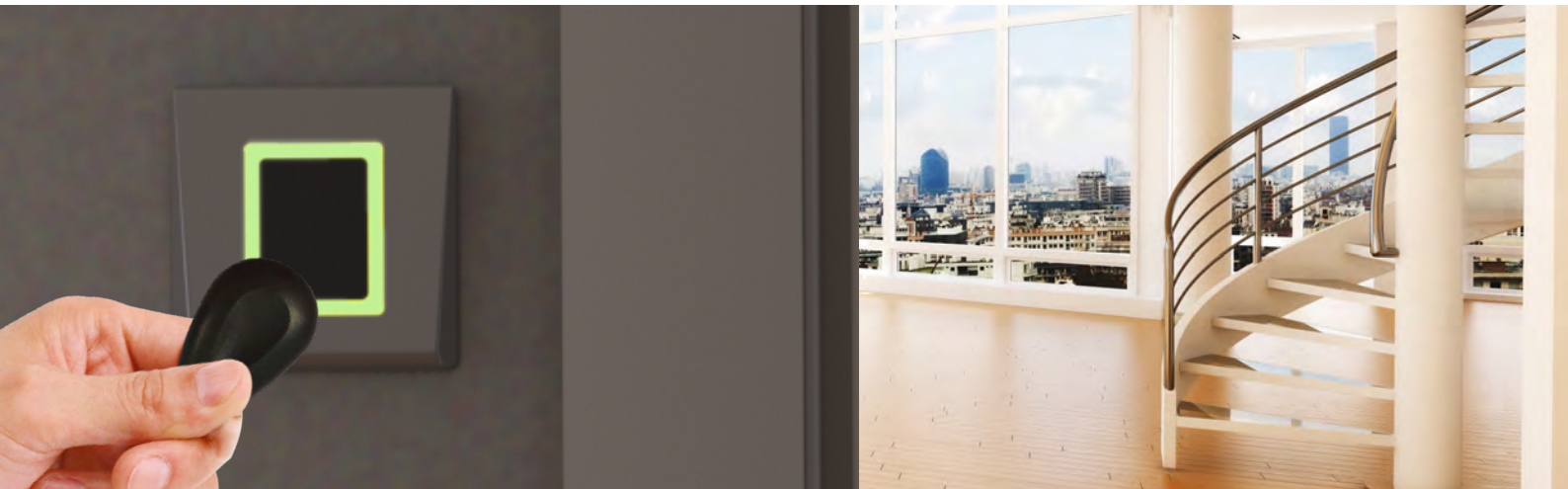
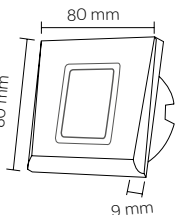
- 20°C /+40°C
- 0% →95%
- 12 VDC
- 40

## DINDB

Door bell and room status indicator

The DINDB indicator is used for two functions: an electronic bell push button and a LED door status display (Privacy or DND and Access allowed). Perfect for the co-working solution.

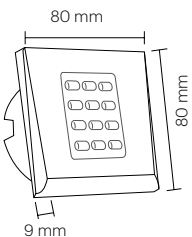
Ref: DINDB-E





# Readers - DIN Range

## Keypads



- °C -25°C /+50°C
- % 0% → 95%
- ⚡ 12-24 VDC  
15-24 VAC
- 🔌
- IP 40

### DINPAD

#### Standalone Keypad

The DINPAD keypad can be installed on any electrical gang box. With backlit metallic keys, it has 2 relays and can store and recognize up to 99 user codes. It has 1 push button input and counts also with anti-tamper protection.

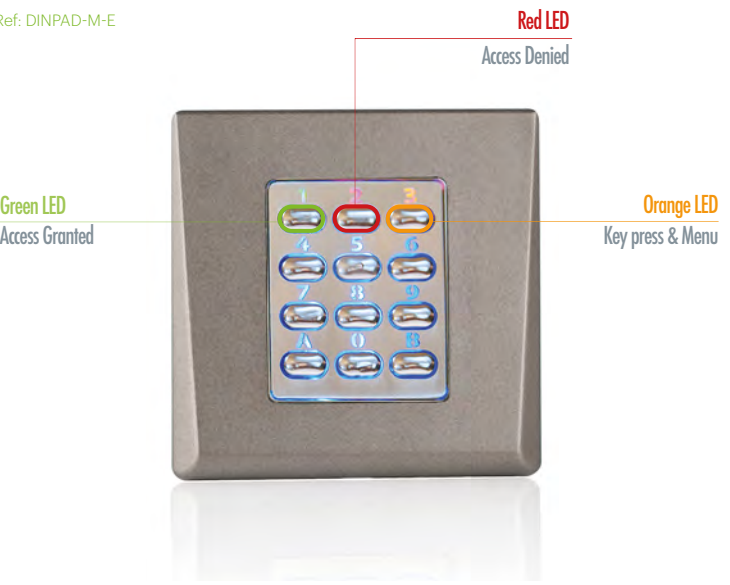
Ref: DINPAD-E

### DINPAD-M

#### Wiegand Flush-Mount Keypad

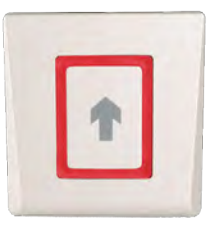
The DINPAD-M is a flush mount multi protocol keypad compatible with Wiegand 26, 30, 34, 40 bit, Data/Clock and Codix. The DINPAD-M offers the option to use an elegant blue backlight on its metal keys. It comes with a buzzer.

Ref: DINPAD-M-E



# Push Buttons - DIN Range

## Exit Push Buttons



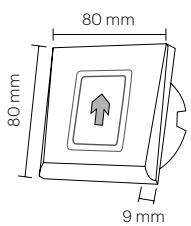
- °C -20°C /+50°C
- % 5% → 80%
- ⚡ 12-24 VDC  
15-24 VAC
- 🔌
- IP 40

### DINMTT

#### Sensitive Push Button

The DINMTT sensitive touch button is an entirely electronic, non-mechanical and smart designed access control device. It can either function as an independent manually-controlled push button or alternatively, be connected to a controller to facilitate access from a secure area.

Ref: DINMTT-E



- °C -20°C /+50°C
- % 0% → 95%
- ⚡ 9-14 VDC
- 🔌
- IP 40

### DINRTT

#### Flush-Mount 2 Relay Remote Unit and Request-to-Exit Button

If secure installation is needed, the biometric reader can be connected to remote relay unit at secured area, which also plays the role of an exit push button.

Ref: DINRTT-E



## Readers Symbols Legend

- 👤 Templates
- 📶 Mifare
- 📶 EH
- 📶 EM
- ⚡ Voltage
- 🔌 Terminal Block
- °C Operating temperature
- % Operating humidity
- IP IP Protection



## Design and customization - DIN RANGE

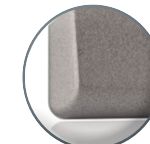
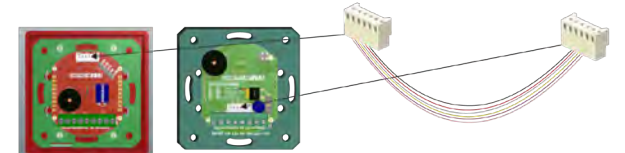
**Choose the technology that you want and combine it in single or double frames.**

Biometry, Keypad and Proximity. 3 technologies that you can combine in double frames, vertical and horizontal, increasing the possibilities to respond to different needs.

### All customized:

- You can choose the technology and the devices that you need: keypad, proximity readers, biometric readers, exit devices, remote electronics \*...
- You can choose the reader's type: Network (Wiegand) or Standalone (1 or 2 relays).
- You can choose the front covers: Electronics can be fitted in a single frame or expand to dual technology side by side in a horizontal or vertical dual frame for an aesthetic design appearance.

\* Each master electronic chosen comes with the I2C cable shown enabling communication with a slave electronic in a dual set up application.



Charcoal



Silver



White



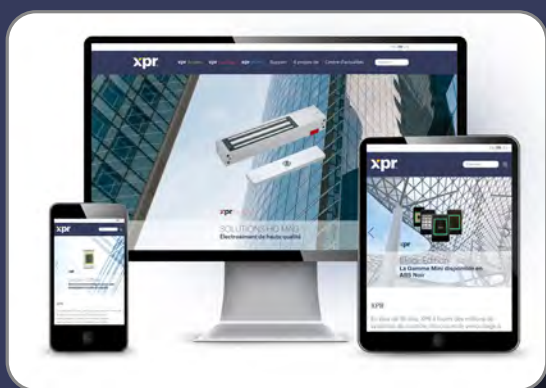
TWO ARE BETTER THAN ONE

➤ CUSTOMIZE YOUR DIN RANGE





# DIN RANGE



**Find us on [www.xprgroup.com](http://www.xprgroup.com)**

We invite you to visit our website to obtain more information about our products.

Ref: CATALOG\_DIN\_EN\_v2

