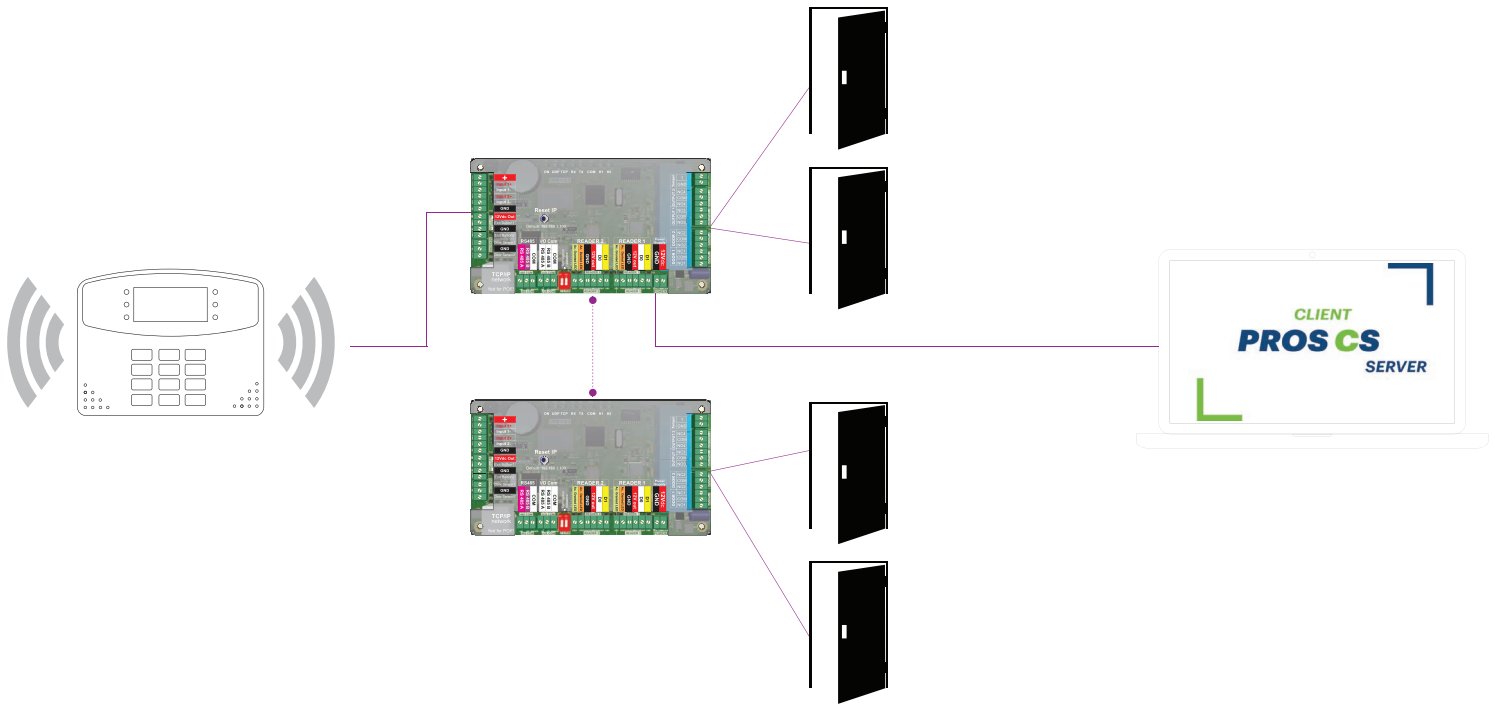


APPLICATION NOTE

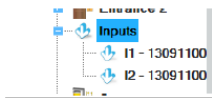
ONLine Access

How to make Global Fire Alarm in EWS system

A005



Go to Input 1 and make it Fire Alarm Input. Wire the alarm there, at that input



Portals\192.168.1.201\13-09-11-000\Inputs\I1 - 130911000

Basic Enabled at Time zones Auxiliaries

Name I1 - 130911000

Type NO

Enable ☒ Enabled by Time zones ☐

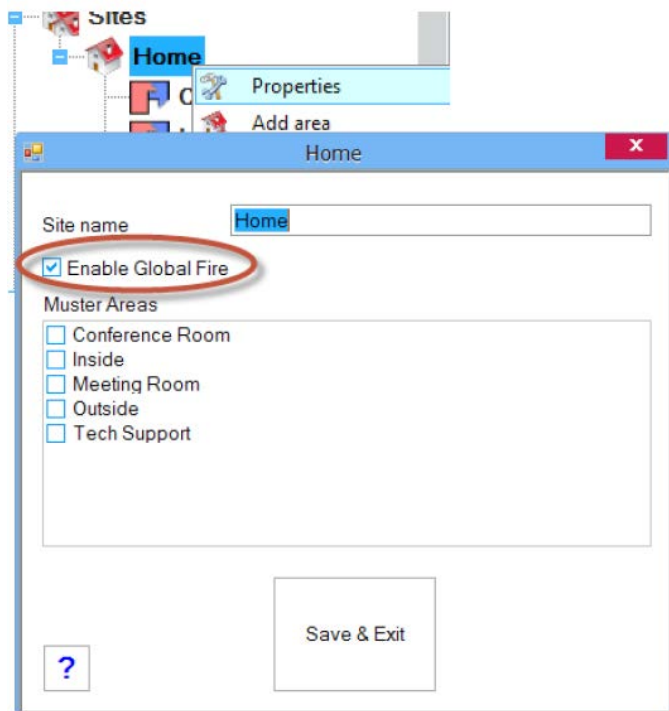
Fire alarm ☒

Required pulse duration to activate 0 0-255 sec

Save & Exit

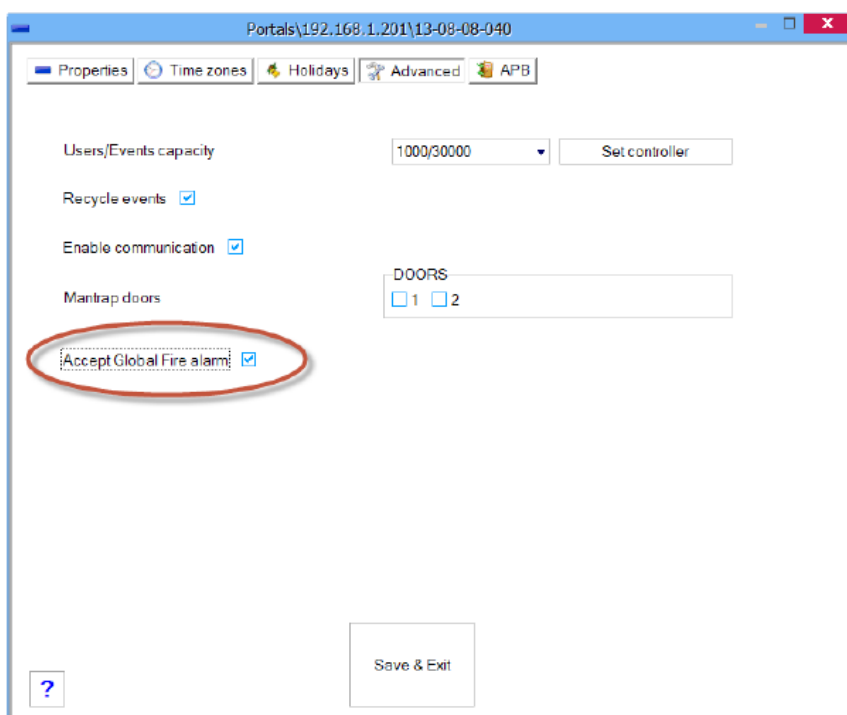
?

In the Site /Properties you can enable the Global Fire Alarm



Then you go to EACH controller individually and you say if this controller will be in Global Fire Alarm or not.

ALL the controllers that are marked in Global Fire Alarm will open the doors if Fire alarm appears. The controllers which are not marked, will stay with doors closed (this is useful for safe locks)



The PC must be ON all the time.

You wire just 1 Fire Input in the whole system.

The Global Fire Alarm can be raised from the PC also.