

APPLICATION NOTE

ONLine Access

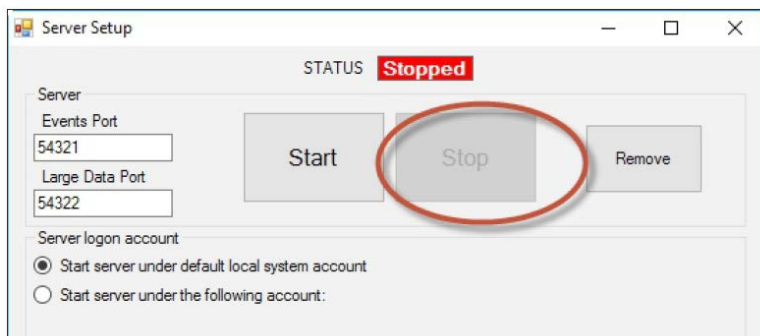
This application note explains how to transfer PROS CS SQL Database from one PC to another

A010

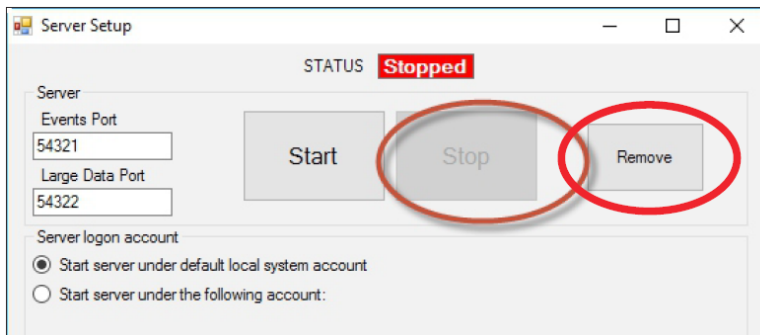
SQL PROS CS DATABASE TRANSFER FROM ONE PC TO ANOTHER

1. STOP the server on the 1st PC.
2. Remove the server on the 1st PC.
3. Detach the database on the 1st PC.
4. Copy the SQL Database Files from Database Folder in the 1st PC.
5. STOP the server on 2nd PC.
6. Detach the database
7. Paste the SQL Database Files
8. Test the connection, click apply the Start the Server

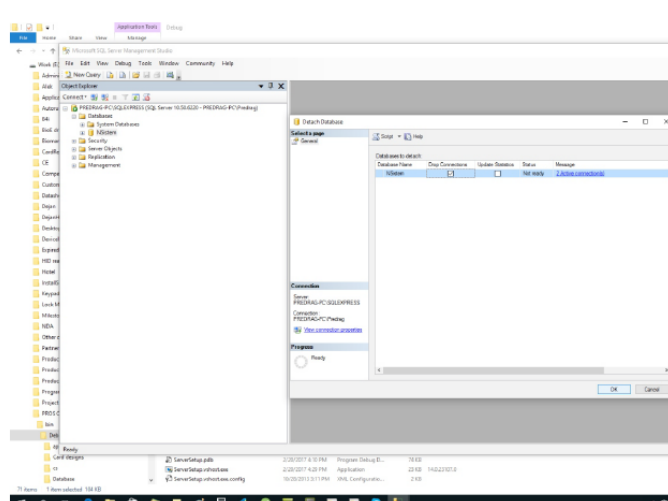
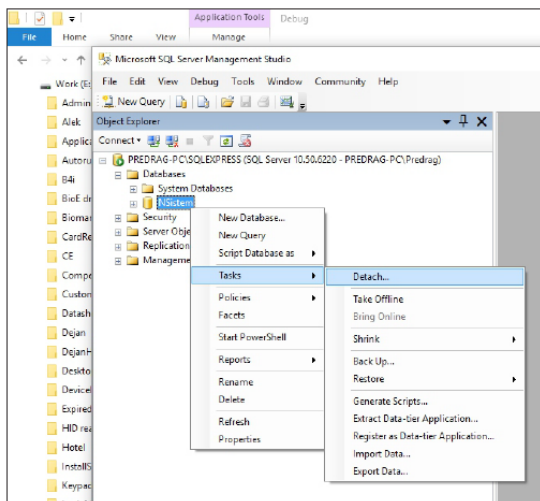
1.



2.



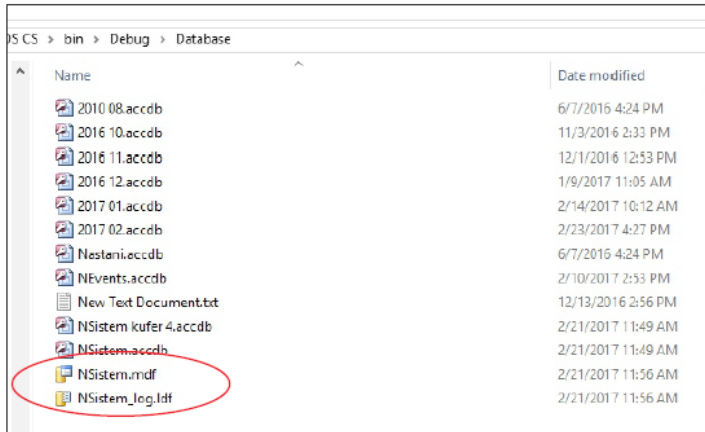
3. - Open SQL Management Studio , right click on the Database/Tasks/Detach



- Tick the checkbox "Drop Connection" and click OK.

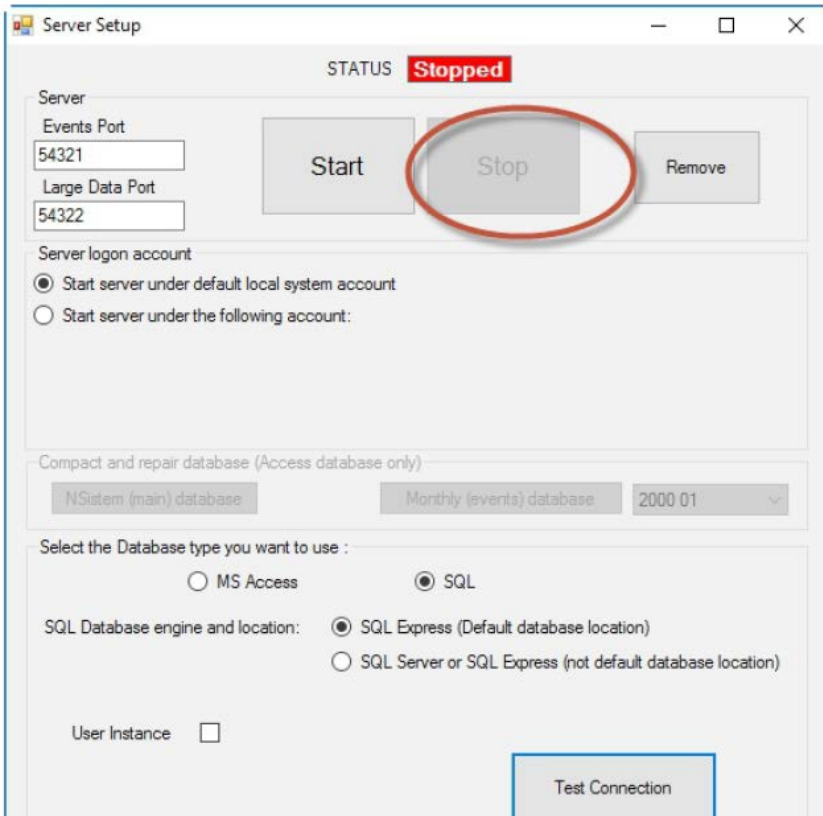
4.

Copy the SQL database files (NSistem.mdf and NSistem_log.ldf) from the "Database" folder.



5.

Stop the server on the 2nd PC



6. Detach the database

7. Paste the SQL database files (NSistem.mdf and NSistem_log.ldf) in the "Database" folder.

8. Test the connection, click apply the Start the Server