

## Activate 4 relays from one reader

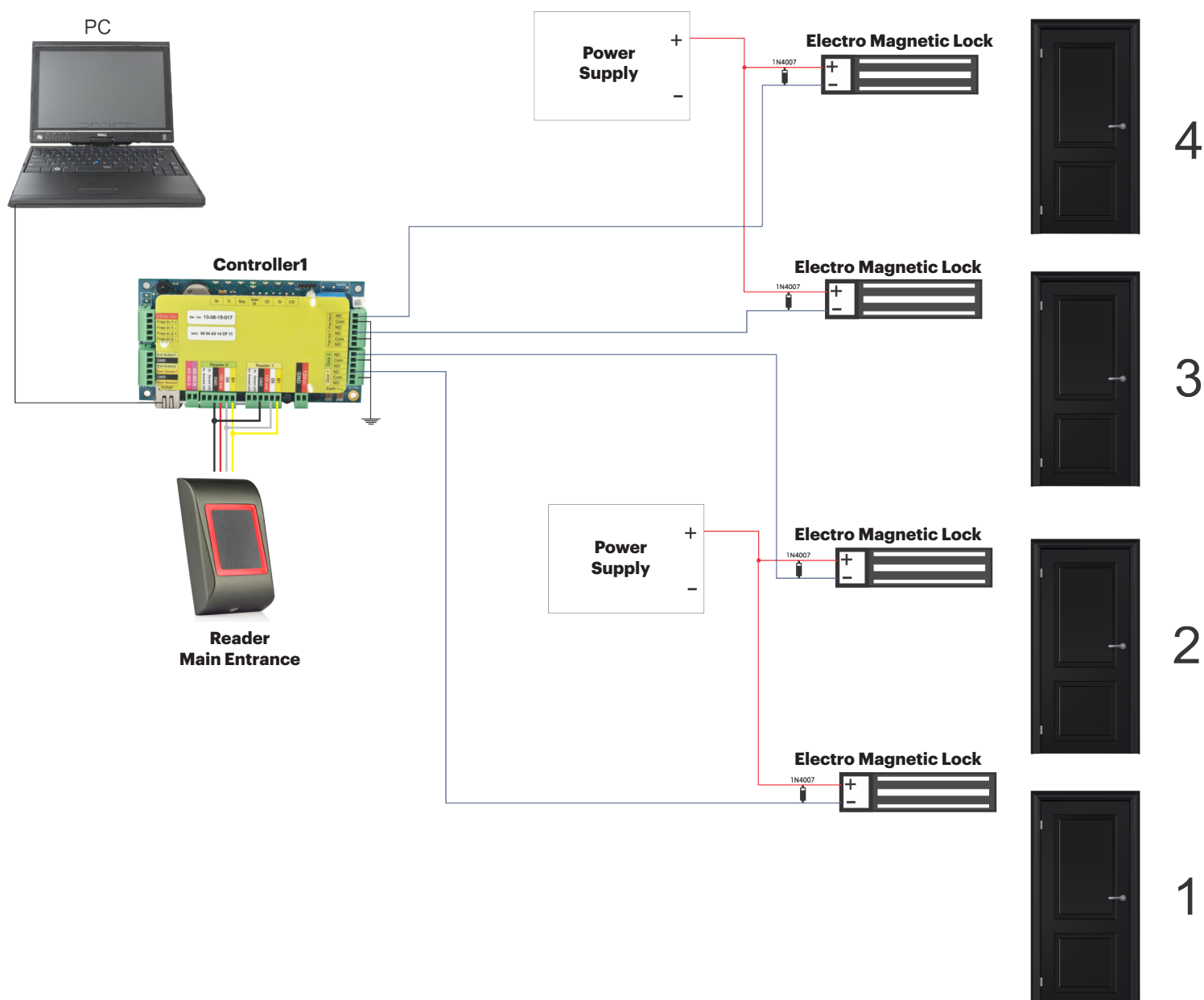
# APPLICATION NOTE

ONLine Access

This application note explains how to control 4 relays in EWSi System

A012

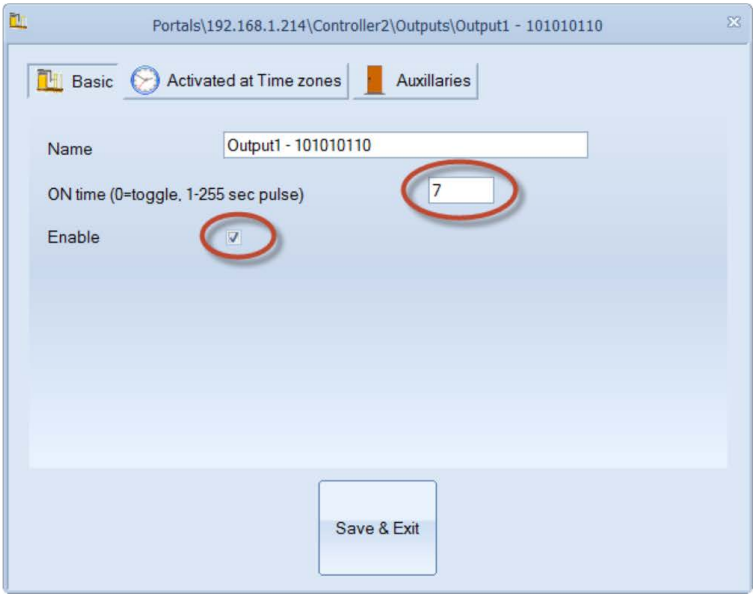
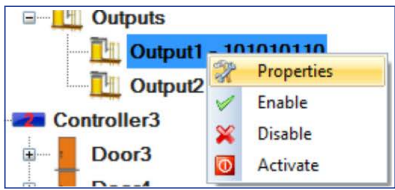
## WIRING DIAGRAM



-Connect the Keypad to both Reader Inputs in PARALLEL. Take + and - only from 1 input and to the others wire D1, D0 and GND.

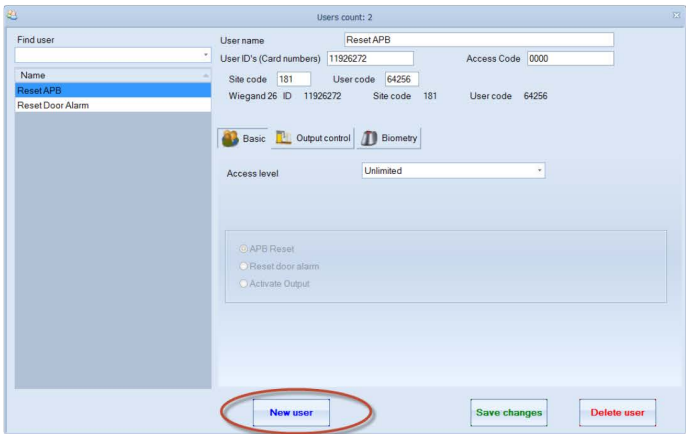
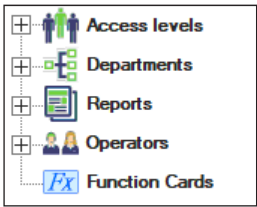
SOFTWARE SETTINGS

1. Enable the outputs and put time(in sec) how long the doors (3 & 4) should stay open upon access granted.

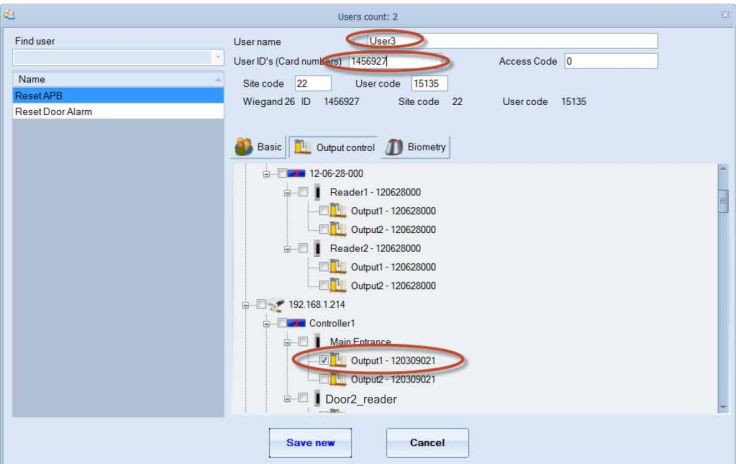


2. Create 2 Users that will Open ONLY the Free Outputs using the Function Card feature.

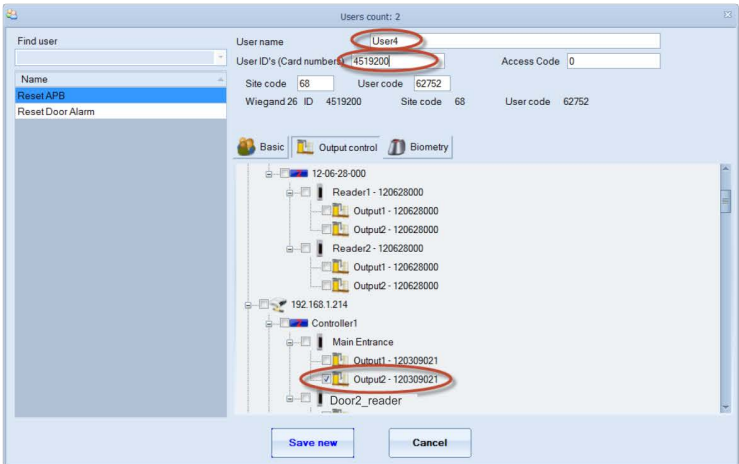
- Double click on “function cards”
- Click on “New User”
- Put the **User Name** and **ID(Card Number)**
- Go to **2nd Tab “Output control”**
- the checkbox for the Free Output of the Reader (Controller1/Main Entrance Reader)
- Save&Exit



User3

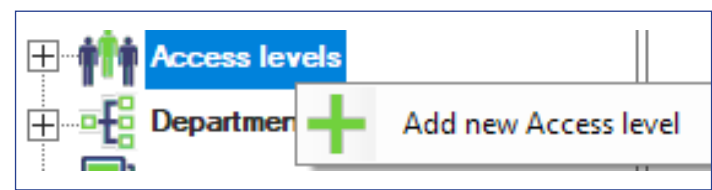


User4

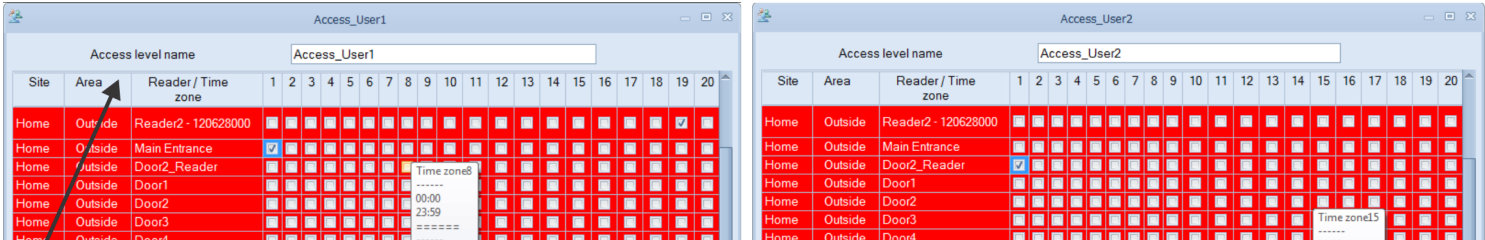


3. Create another 2 Users that will have access only to 1 Door (User1 to Door1, User2 to Door2) using the Access Levels..

3.1. Make 2 different Access levels for 2 users. The Access levels should be made in that manner so it gives access to certain user ONLY to one of the 2 doors (door 1 or door2).

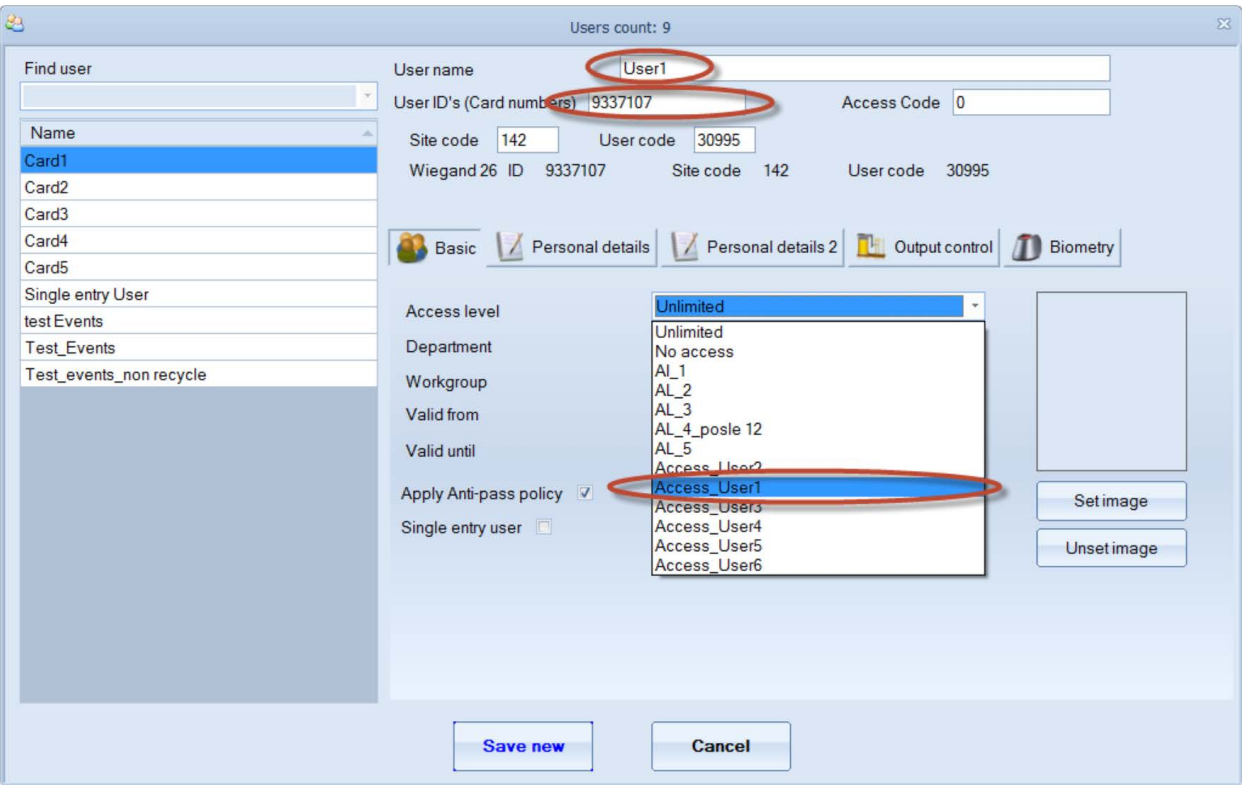


Name it: "Access\_User1". Tick the "Door1" checkbox. Save&Exit. Make another: "Access\_User2". Tick the "Door2" checkbox.



**Note: In the Access Levels is given the name of the reader, not the door.**  
**For easier creation of the access levels put name for the readers like: Door1\_Reader, Door2\_Reader...**

3.2. Create 2 users and assign them with previously created Access levels.



With all of these settings User1 will be able to open Door1, User2 - Door2...