

APPLICATION NOTE

ONLine Access

How to install the
Milestone plug-in for
PROS CS.

A019

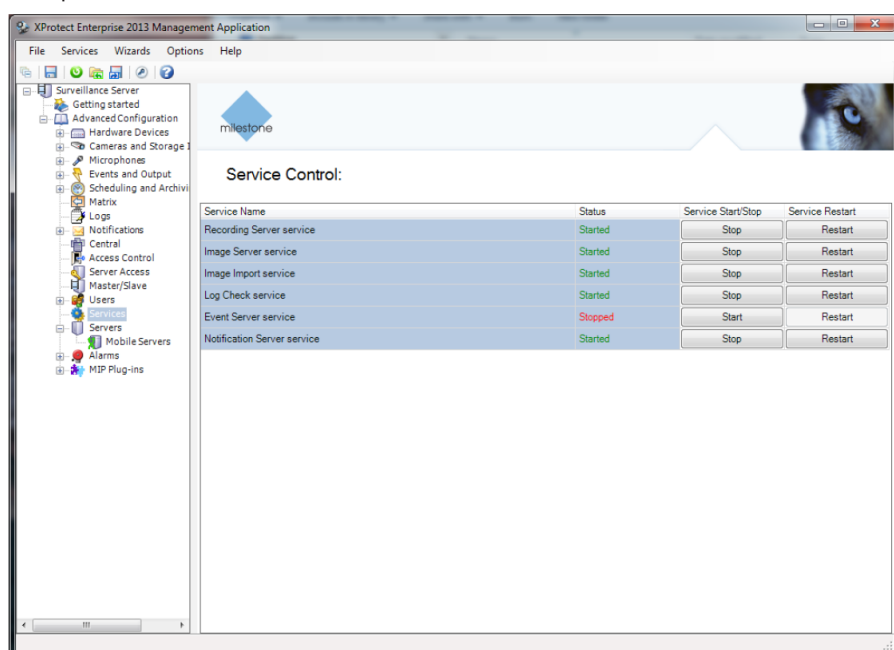
1. INSTALLATION OF THE ACCESS CONTROL PLUG-IN

Make sure that you have:

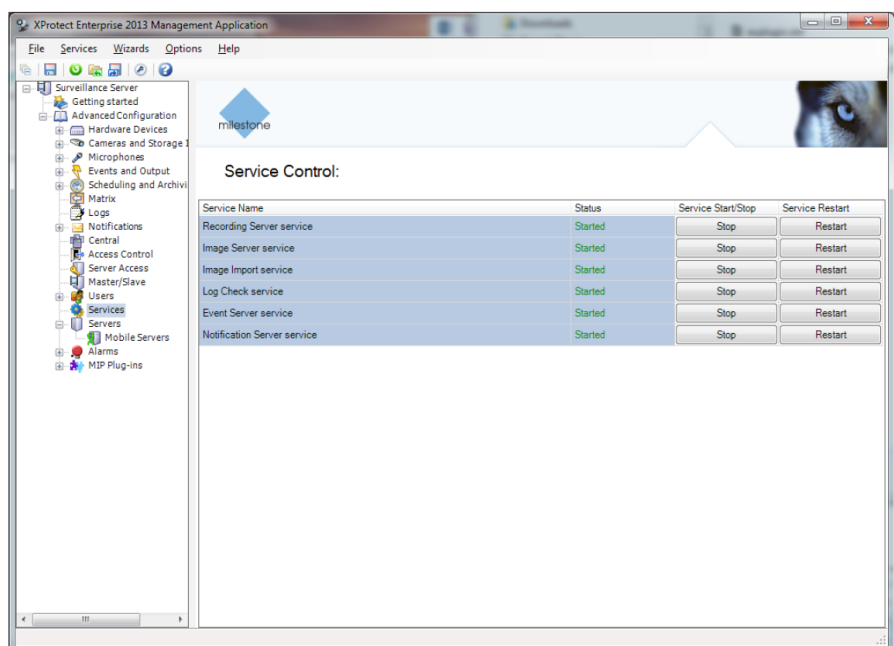
- a running **PROS CS** version 2.1 or higher
- a running **Milestone XProtect** system
- **PROS_AccessControlPlugin.msi** setup file available
- **Microsoft.net Framework 4.5.1** installed

If these preconditions apply:

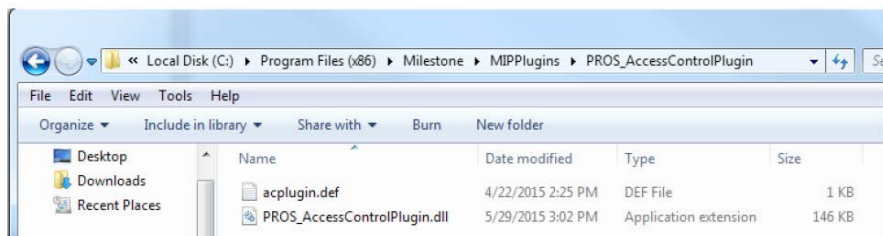
- Create Operator in the PROS that will be used by Video system for login to PROS. Password length must be at least 5 characters
- Start the **Milestone XProtect Management** application
- Select **Advanced Configuration**
- Stop the Event server Service



- Run the plug-in installation process until it is completed (**PROS_AccessControlPlugin.msi**)
- Restart the Event Server Service



If the plug-in is installed correctly the below listed files can be found in the PROS_AccessControlPlugin folder of the Milestone XProtect system.

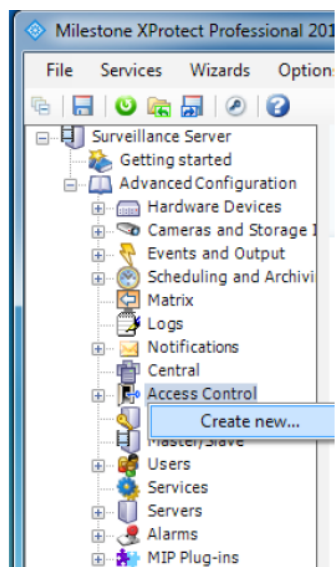


Important!

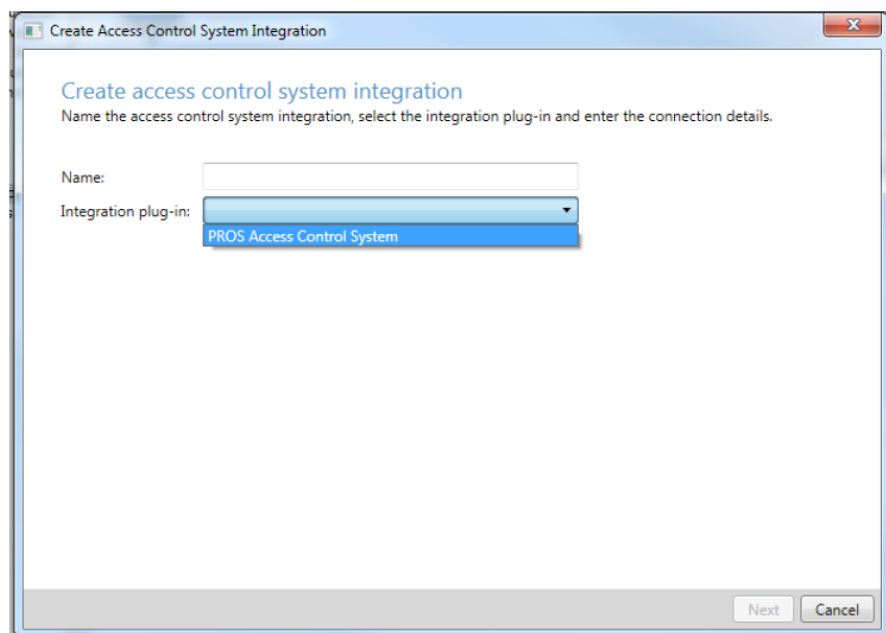
If the PROS Server and the XProtect system are not running on the same server, make sure that the **PROS_AccessControlPlugin** plug-in is installed on the server where the Milestone XProtect system is installed.

2. CONFIGURATION OF THE ACCESS CONTROL INTEGRATION

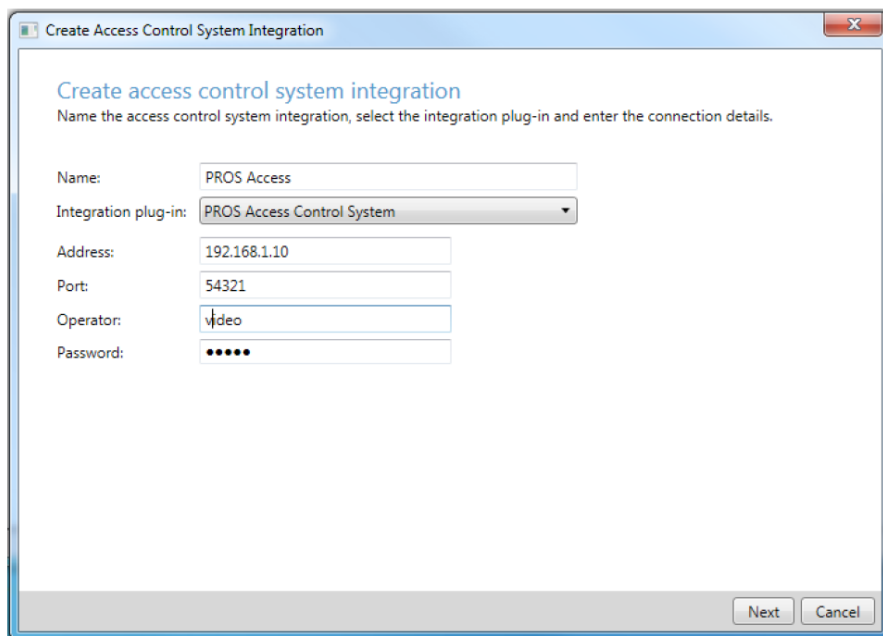
Go to the management application and navigate to the **Access Control** section in the tree. Right-click the node and select "Create new..." to create a new control.



- Enter a name (e.g. PROS Access)
- Select the installed Plug-in (PROS_Access Control System)



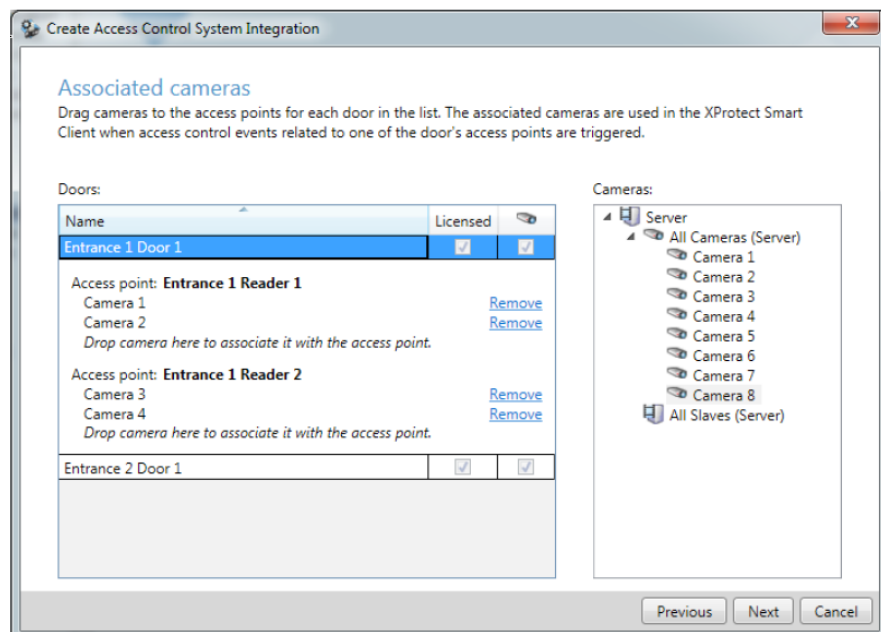
- Enter an PROS Server IP-Address or Host name
- Enter port number (default is 54321)
- Enter the Username and Password of the operator created in the PROS
- Click the **Next** button



The wizard will now try to connect the PROS to retrieve relevant configurations. Once connected, a list of all PROS configurations is displayed, as e.g. devices, events, commands.

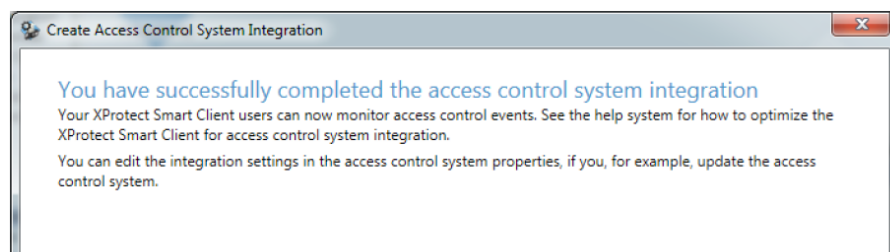
– Click **Next** to proceed

The dialog **Associated Cameras** is displayed:

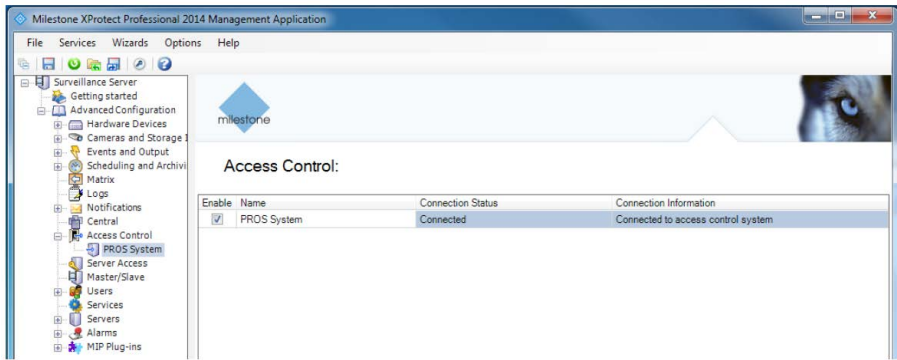


- Select a camera from the right column and assign it by Drag-and-Drop to the reader of the appropriate access point in the left column.
- If everything is configured, Click the **Next** button

With this step the configuration is done:



- Verify that the PROS and XProtect system are connected



3. SYNCHRONIZATION OF CONFIGURATION CHANGES

Cardholder data will automatically be updated in the XProtect system. For other configuration changes, a manual refresh action is required. Click the **Refresh Configuration** button to synchronize the systems.

