

8 digit code for VKP connected to EWS

APPLICATION NOTE



To use 8 digit code for VKP connected to EWS, settings must be done both in the VKP and in the EWS

1. Set the VKP to Wiegand30bit
2. Set the EWS to receive Wiegand30bit

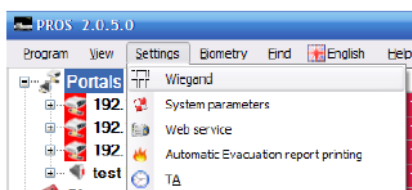
Note: The code used must be from **1** up to **16 777 215**

SET THE VKP TO WIEGAND 30BIT

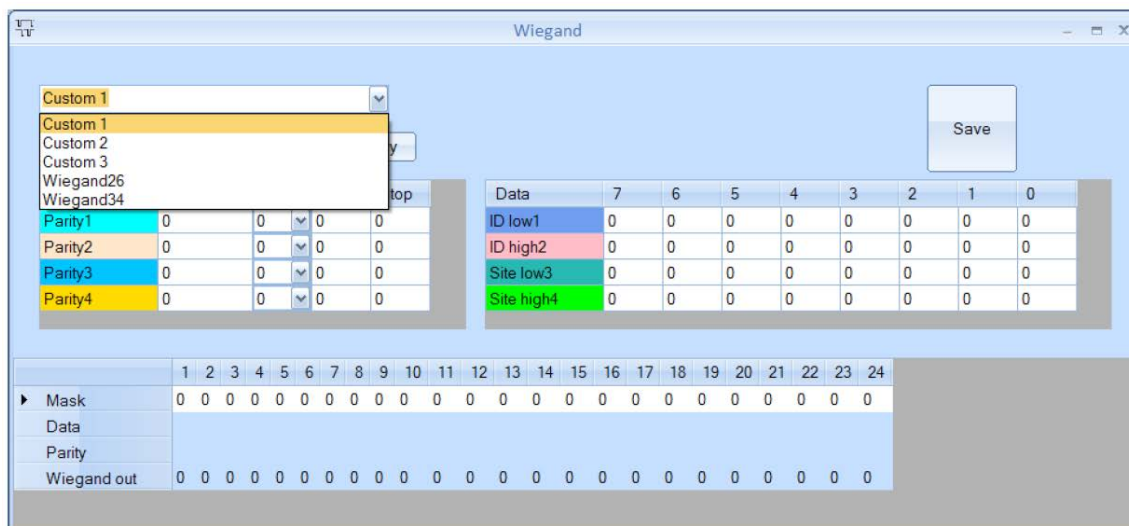
• As explained on page 2 (select protocol), disconnect power supply, put dipswitch1 ON, put back the power supply, press A, press 2+A, press B to exit.

SET THE EWS TO RECEIVE WIEGAND30BIT

- Go to settings/Wiegand



- Select Custom1



- Here, Wiegand30bit must be customized. Put all the numbers as shown in the snapshot. The parameters that are marked in red must be put as described. Type Name “Wiegand30”.
- Click Apply then Save.

Item	Location	Type	Start	Stop
Parity1	1	1	2	15
Parity2	30	0	16	29
Parity3	0	0	0	0
Parity4	0	0	0	0

Data	7	6	5	4	3	2	1	0
ID low1	22	23	24	25	26	27	28	29
ID high2	14	15	16	17	18	19	20	21
Site low3	6	7	8	9	10	11	12	13
Site high4	0	0	0	0	2	3	4	5

	1	2	3	4	5	6	7	8	9	10	11	12	13	14	15	16	17	18	19	20	21	22	23	24	25	26	27	28	29	30
Mask	0	0	0	0	0	0	0	0	0	0	0	0	0	0	0	0	0	0	0	0	0	0	0	0	0	0	0	0	0	0
Data	2	3	4	5	6	7	8	9	10	11	12	13	14	15	16	17	18	19	20	21	22	23	24	25	26	27	28	29		
Parity	P1	1	1	1	1	1	1	1	1	1	1	1	1	1	0	0	0	0	0	0	0	0	0	0	0	0	0	0	P2	
Wiegand out	P1	2	3	4	5	6	7	8	9	10	11	12	13	14	15	16	17	18	19	20	21	22	23	24	25	26	27	28	29	P2

- Go to the controller, select the Reader where the VKP is connected, and right click properties.

Basic Free Access Time Zones Biometric

Name tret 1

Type Proximity

Door Door1

Wiegand type Wiegand30

Enable access by time zones

Bypass Antipassback

Exit from

Entry to Inside

Antipassback reset time 00:00

Free access 24/7

If 0 illegal attempt, disable for 0 minutes

Save & Exit

- Select the Wiegand that we have just customized (wiegand30)