

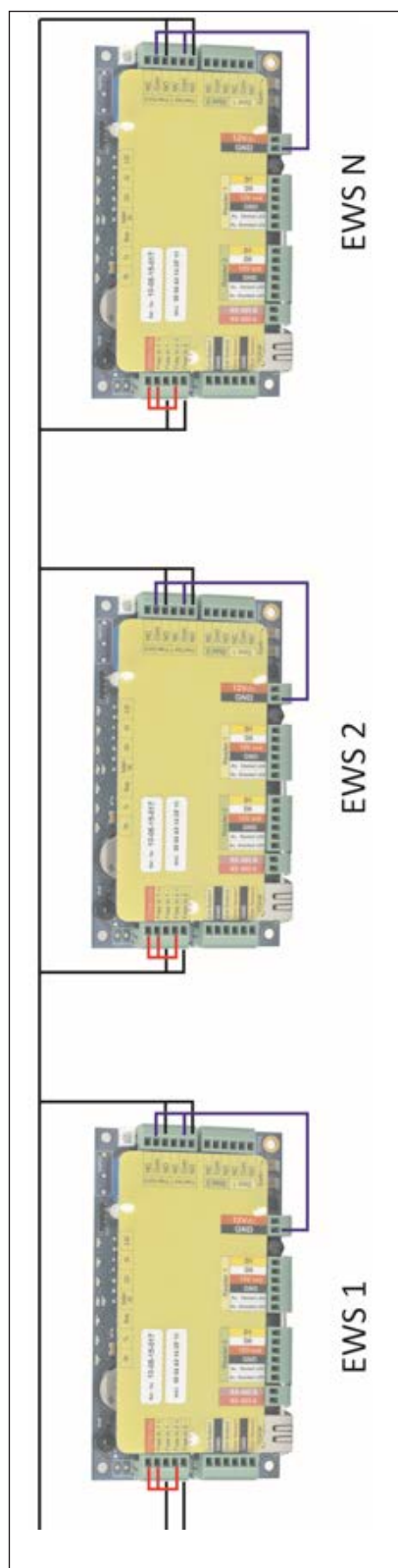
APPLICATION NOTE

ONLine Access

This application note explains how to connect more than 2 doors in Mantrap in EWS system

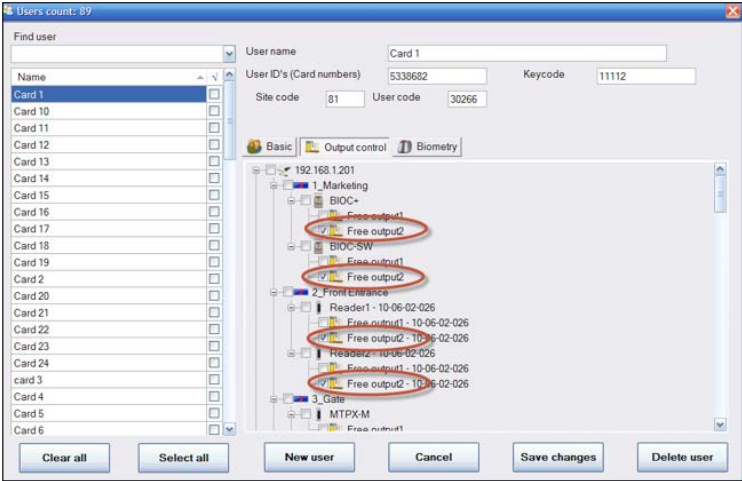
AO41

Scheme for connection of the EWS for multi door mantrap

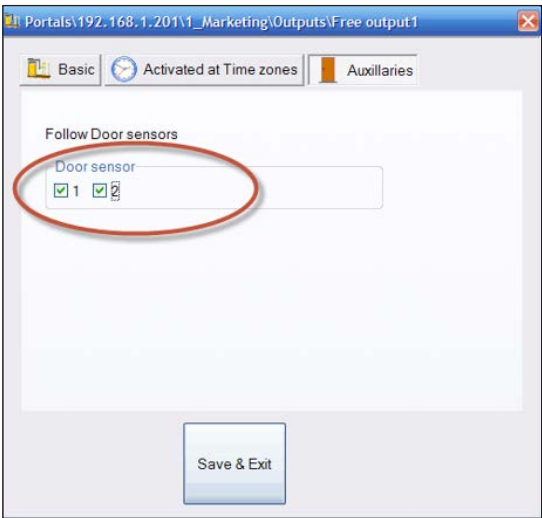


Settings in the PROS for multi door mantrap

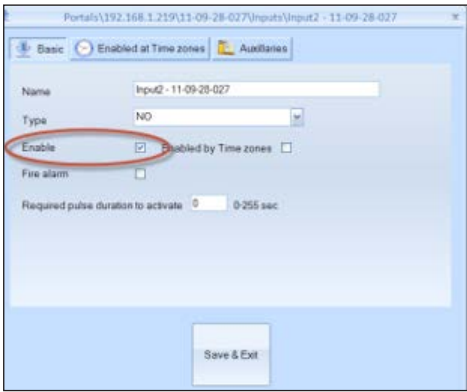
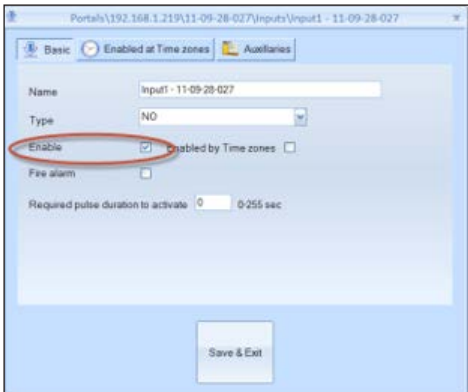
Set up all users to activate “Free output 2”.



Enable “Free output 1” and set to follow “door sensor 1” and “door sensor 2”.



Enable “Free Input 1” and “Free Input2”.



Door 1 set to be disable by “Free input 1” and “Free input 2”.
Door 2 set to be disable by “Free input 1” and “Free input 2”.

Portals\192.168.1.201\1_Marketing\Door1

Basic Auxiliaries Time zones

When door is legally open activate

When door is forced open activate

When door is left open activate (Alarm 1)

When door is open long activate (Alarm 2)

When Push button pressed activate

Disable door by input

OUTPUTS

1 2

1 2

1 2

1 2

1 2

INPUTS

1 2

Save & Exit

“ON Time” for the Free Output 2 to be equal or larger then “Lock Release Time” of the doors (ON Time = Lock Release Time + 1sec. recommended).
Enable “Free Output2” and “Free Output1”.

Portals\192.168.1.216\10-10-10-111\Outputs\Free output2 - 12-06-28-001

Basic Activated at Time zones Auxiliaries

Name Free output2 - 12-06-28-001

ON time (0=toggle, 1-255 sec pulse) 5

Enable

Save & Exit

Portals\192.168.1.216\10-10-10-111\Door1 - 12-06-28-001

Basic Auxiliaries Time zones

Door enabled Enabled by Time zones

Name Door1 - 12-06-28-001

Lock release time 4 (1-255sec, 0=Toggle mode)

Door left open allowed time (Alarm 1) 5 (1-255sec, 0=disable)

Door opened too long time (Alarm 2) 2 (1-255min, 0=disable)

Enable door sensor

Door sensor type (state at closed door) NC NO

Push button type NC NO

Push button enabled Enabled by Time zones

Save & Exit

In the Controller/Properties/Advanced Tab/ “Mantrap door” 1 and 2 checked

Portals\192.168.1.201\1_Marketing

Properties Time zones Holidays Advanced APB

Users/Events capacity 1000/30000 Set controller

Recycle events

Enable communication

Mantrap doors

DOORS

1 2

Save & Exit

EXPLANATION:

When user presents a card on any of the readers, access will be granted, the door will be open and Free Output 2 will be activated. The Free output 2 is wired directly to Free Input 1 and 2, which will disable all the doors (since the doors are set to be disabled by any Input). In this state, if card is presented on any reader nothing will happen since the doors are disabled. From the other hand, Free Output 1 is set to follow the state of any Door sensor, which means when the door sensor is closed (Door Closed), Free Output 1 will be activated, and that output will enable all the doors.