

## Task\_Door to stay open until card on R2

# APPLICATION NOTE

ONLine Access

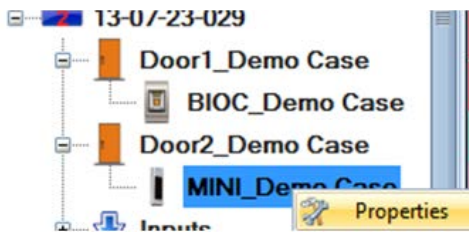
Door 1 to open and remain open, until another card is presented on Reader 2.

A045

### TASK:

**DOOR1** to be open when valid card is presented to reader1. **DOOR1** to remain open until a valid card is presented on **Reader2**.

1.Go to **Reader2** / right click/properties



1. Go to **Reader2** / right click/properties

Portals\192.168.1.216\_Demo Case\13-07-23-029\Door2\_Demo Case\MINI\_Demo Case

Basic Free Access Time Zones

Reader 2

Name MINI\_Demo Case

Type Proximity

Door Door2\_Demo Case

Wiegand type Door1\_Demo Case

Door2\_Demo Case

Enable access by time zones ☒

Bypass Antipassback ☐

Exit from Research

Entry to Stock

Antipassback reset time 00:00

Free access 24/7 ☐

If 0 illegal attempt, disable for 0 minutes

Required number of valid users for access 1

Save & Exit

3. After that, this will happen. Both readers will open Door1 and they will appear under Door1.



4. Put **DOOR1** to work in Toggle(ON/OFF) Mode

Portals\192.168.1.216\_Demo Case\13-07-23-029\Door1\_Demo Case

Basic Auxillaries Time zones Alarms

Door enabled ☒ Enabled by Time zones ☐

Name Door1\_Demo Case

Type Door

Lock release time 0 (1-255sec, 0=Toggle mode)

Door has not been close timer (Low priority alarm) 15 (1-255sec, 0=disable)

Door open too long timer (High priority alarm) 1 (1-255min, 0=disable)

Enable door sensor ☒

Door sensor type (state at closed door) NC ☒ NO ☐

Push button type NC ☐ NO ☒

Push button enabled ☒ Enabled by Time zones ☐

Save & Exit