

PSDIN12V18W1,5A

COMPACT AND SMALL POWER SUPPLY

Compact and small power supply that easily fits into an electrical gang box. This power supply can be also used for surface mounting.

The PSDIN12V18W1,5A can power a reader and a magnet at the same time.



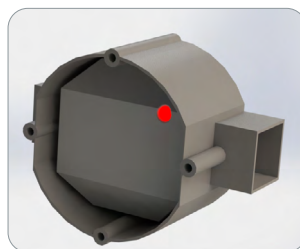
FEATURES

Voltage In:	from 110 to 240 VAC - 50/60 Hz
Voltage Out:	12 VDC
Current max.:	1,5 A
Power max.:	18 W
Voltage monitoring:	LED
Dimensions:	diameter \varnothing : 58,5 mm - h: 32 mm / 48,5 x 51,5 x 32 mm (LxWxH)

MOUNTING



Fixing for surface mounting



Mounting in electrical gang box