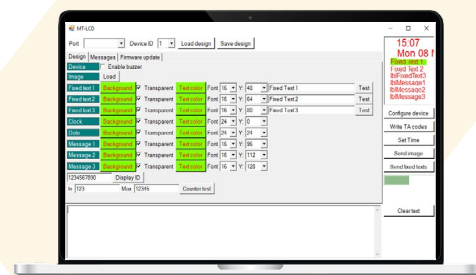


XPR Toolbox

FIRMWARE UPDATE & PROGRAMING SOFTWARE



The **XPR Toolbox** is a new user-friendly software designed to manage XPR readers with a RS-485 bus or micro-USB port.

You can set-up the readers as well update the firmware or new settings you would like to add or remove. It is available in English and compatible with Windows operating systems.

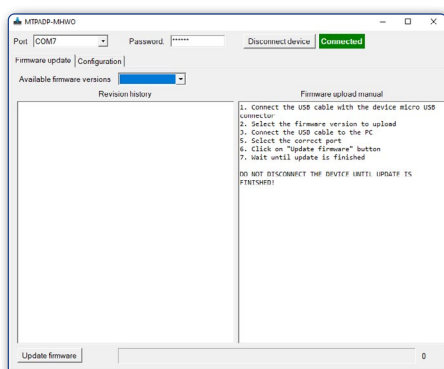
Suitable for different devices



The **XPR Toolbox** software is compatible with several readers from different XPR solutions - Standalone, Webserver or OnLine - and some peripherals like the MT-LCD display or the RB0408 relay board. It is compatible with any XPR device with a RS-485 bus or micro-USB port.

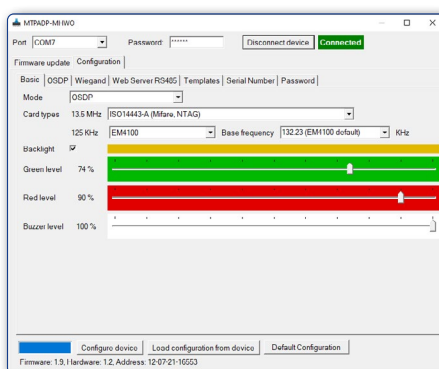
With help of this software, you can update the devices firmware, set-up or change the configuration needed for the readers.

Main features



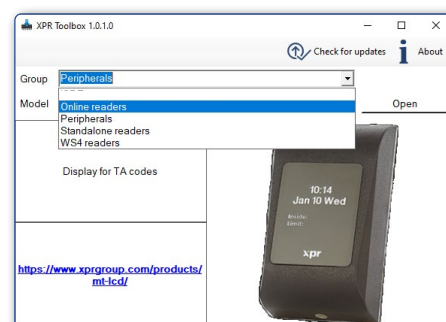
Firmware update

Once the reader is connected to the computer, you can check the last available firmware and you are able to install it with some easy instructions.



Settings configuration

For some devices you can also set-up and change the settings needed. For example, for your XPR 2.0 reader(s), you can select the technology, card types, etc. For more specific settings there are the following tabs: OSDP, Wiegand, templates and password.



Different systems

There is a window that shows the different groups (peripherals and ON-Line, Standalone and WS4 readers) and the models of each of them.

List of compatible devices

- EX6
- EX6P
- LCSP-RS-EH
- LCS-RS
- MTPX-RS-EH
- MTPX-RS-MF
- MT-LCD
- MTPADP-RS-EH
- RB0408
- INOX-SA
- MTPAD-SA
- MTPADP-EH-SA
- MTPADP-RS-MF
- B100P-RS-EH
- PROX-USB
- B100PROX-USB
- BIOPROX-USB
- XPR 2.0 range