

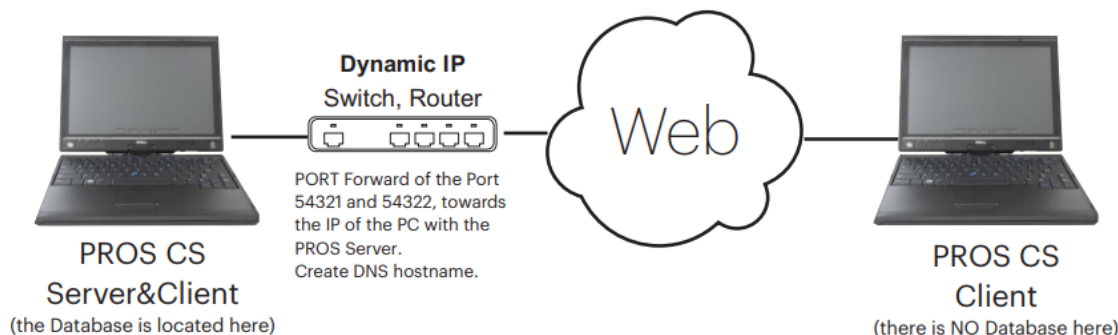
PROS CS client-server connection with dynamic IP

APPLICATION NOTE

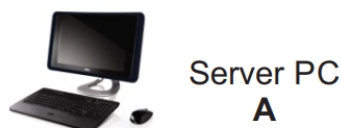
ONLine Access

This application note explains how to establish connection between PROS CS Server PC and PROS CS Client PC, when the PCs are in different network using dynamic IP

A003



SERVER

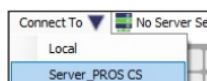
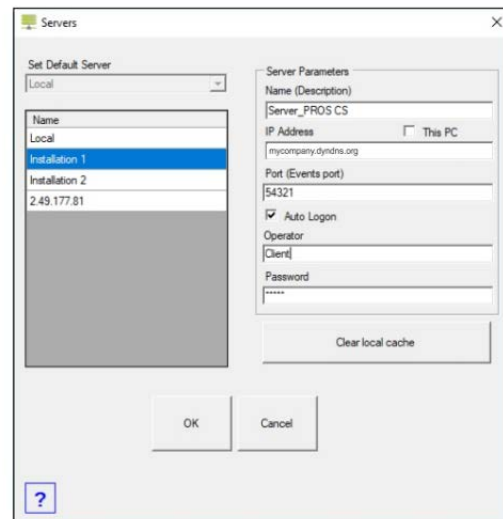
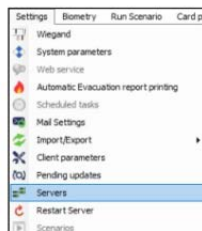
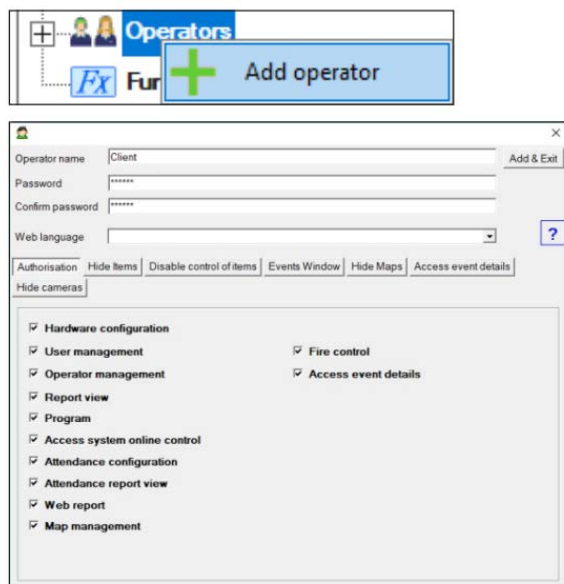


1. Install PROS CS Server (while installing select "server").
2. Create an Operator for the client, operator different than "Admin".
3. Create DNS hostname.
4. Make port forward of the Port 54321 and 54322, towards the IP of the PC with the PROS Server.

CLIENT

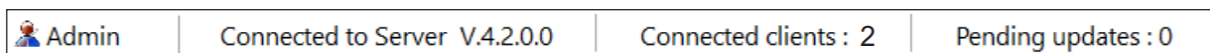


1. Install PROS CS Client (while installing select Client").
2. Go to Settings/Servers.
3. Make NEW Server.
- Enter name and the DNS Hostname of the Site where is the Server PC. For port, enter 54321.



4. Connect to the Server that you have just created, using the Operator that you created in PC A (Server).

Note: Monitor on both PC, in the left hand side bottom corner, if you are connected or not and with which operator.



Note: If you still can not establish connection, then turn off Window Defender Firewall or allow the connection of the ports 54321 and 54322 by creating New Rule in Window Defender Firewall/Advanced settings/Inbound and Outbound Rules. Restart the Server also

