

# Increase user capacity in EWS controller

## APPLICATION NOTE

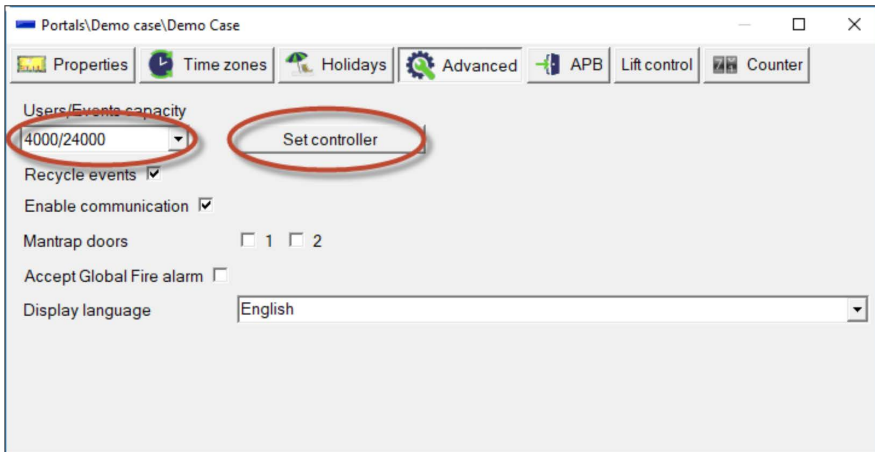
ONLine Access

How to increase the user capacity in PROS CS

A031

The EWS controller comes with capacity of 1000. The capacity can be increased to 15 000 Users

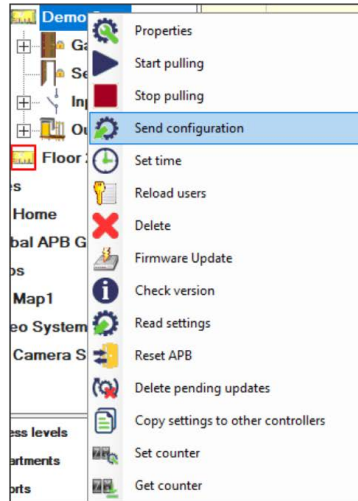
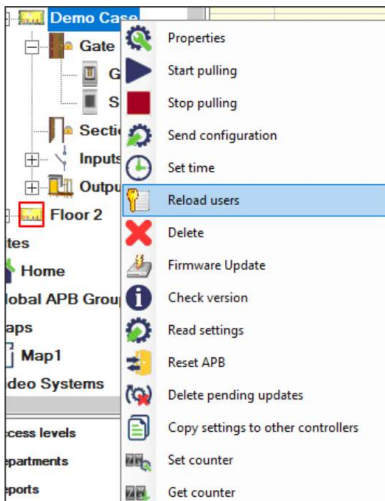
Right click on the controller/Properties. Go to advanced tab. Set the User/Events capacity to 4000 or more. Then click on "Set controller".



You will get message in the event window that the capacity is changed.

R ↓	Time	Device	Event
15:21:38	15:21:38 19.07.19	Controller: Demo Case	Users/Events capacity changed to 4000/24000: OK

Changing the User capacity will delete the configuration and the current users. So resend the users and the configuration.



Change the user capacity to all controllers on the installation site.