

APPLICATION NOTE

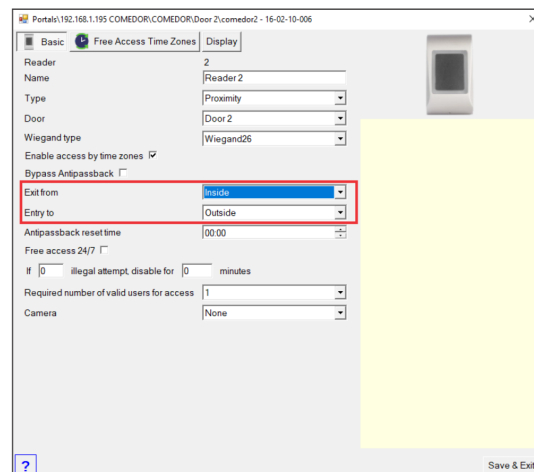
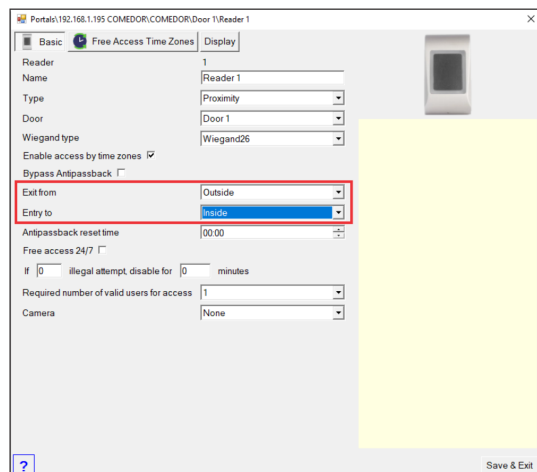
ONLine Access

How to set up counter in PROS CS

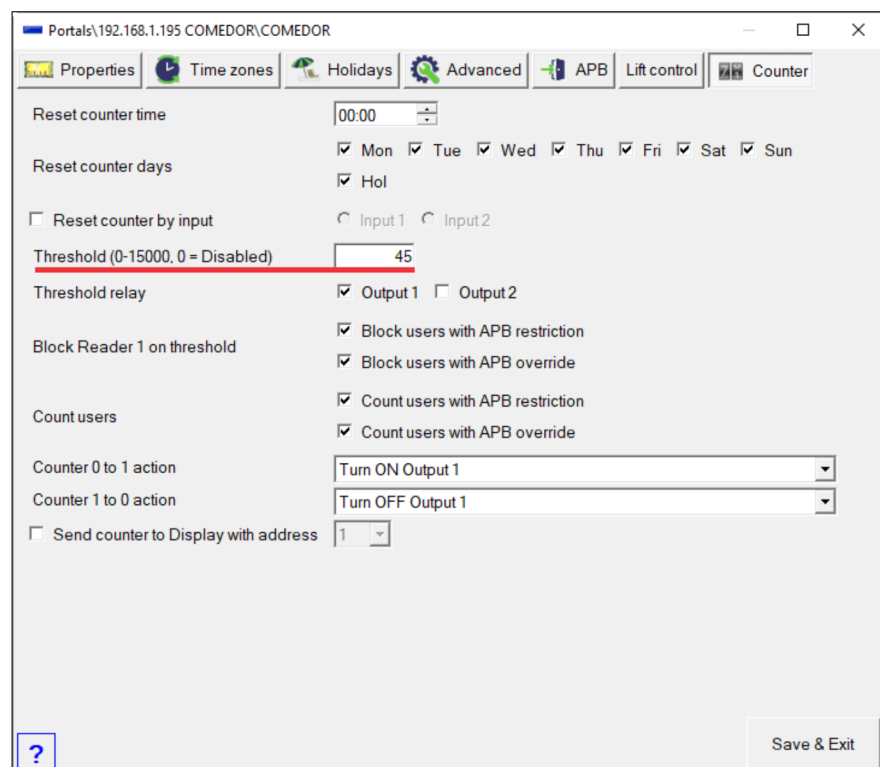
A047

The counter works with EWSi firmware 4.02 or higher.

1. Make sure both Reader 1 and Reader 2 are set as IN and OUT readers. Additionally, they can open the same door.

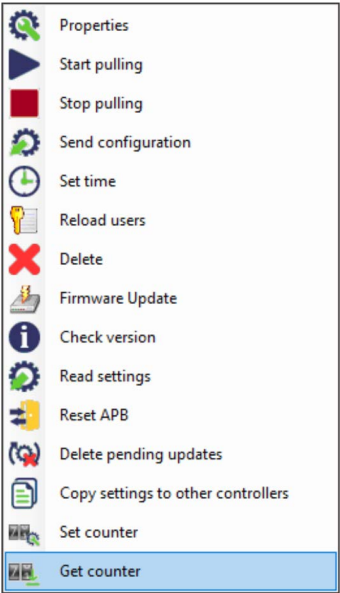


2. Go to Controller/Right click/Properties and select the Counter Tab.



- Select the threshold when the counter will be activated.
- Select if additional Output relay should be activated when threshold is achieved.
- Select if ALL users should be blocked or only users that have or have not Anti-passback.
- Additionally, you can select action for the feature "First man IN, last man OUT". That is done with "Counter 0 to 1 action" and "Counter 1 to 0 action".

If you want to check the current status of the counter, right click on the controller and select “Get Counter”



RESET Counter

The counter can be reset to zero on 3 ways.

- 1. Right click on the controller/Reset Counter
- 2. Automatic reset (by time and weekday)
- 3. Reset the counter by Free Input. You can connect mechanical button there to reset the Counter.

