

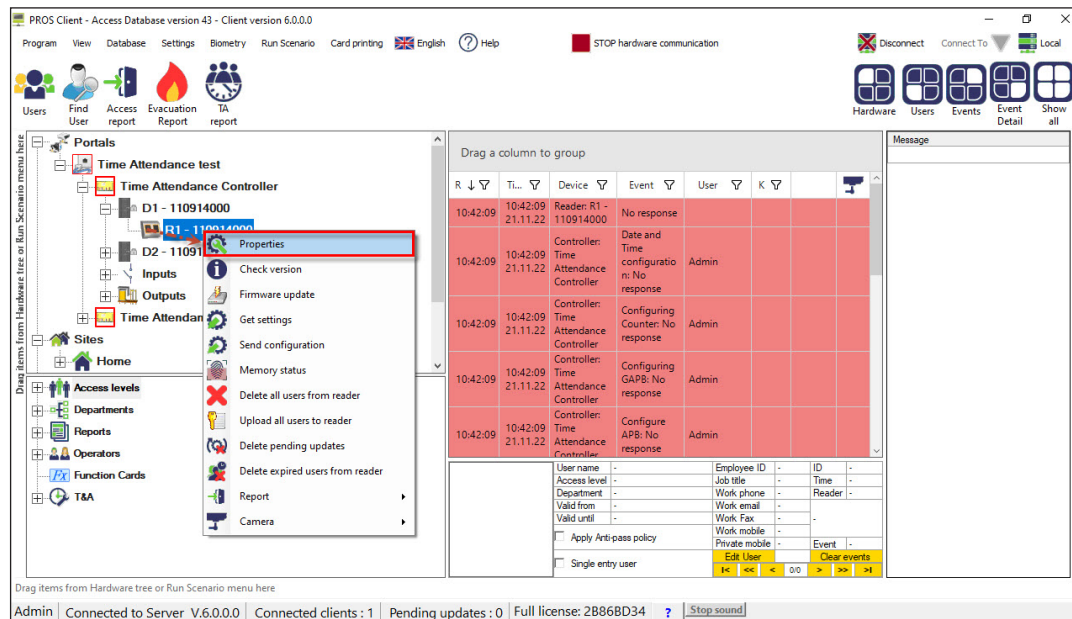
## APPLICATION NOTE

ONLine Access

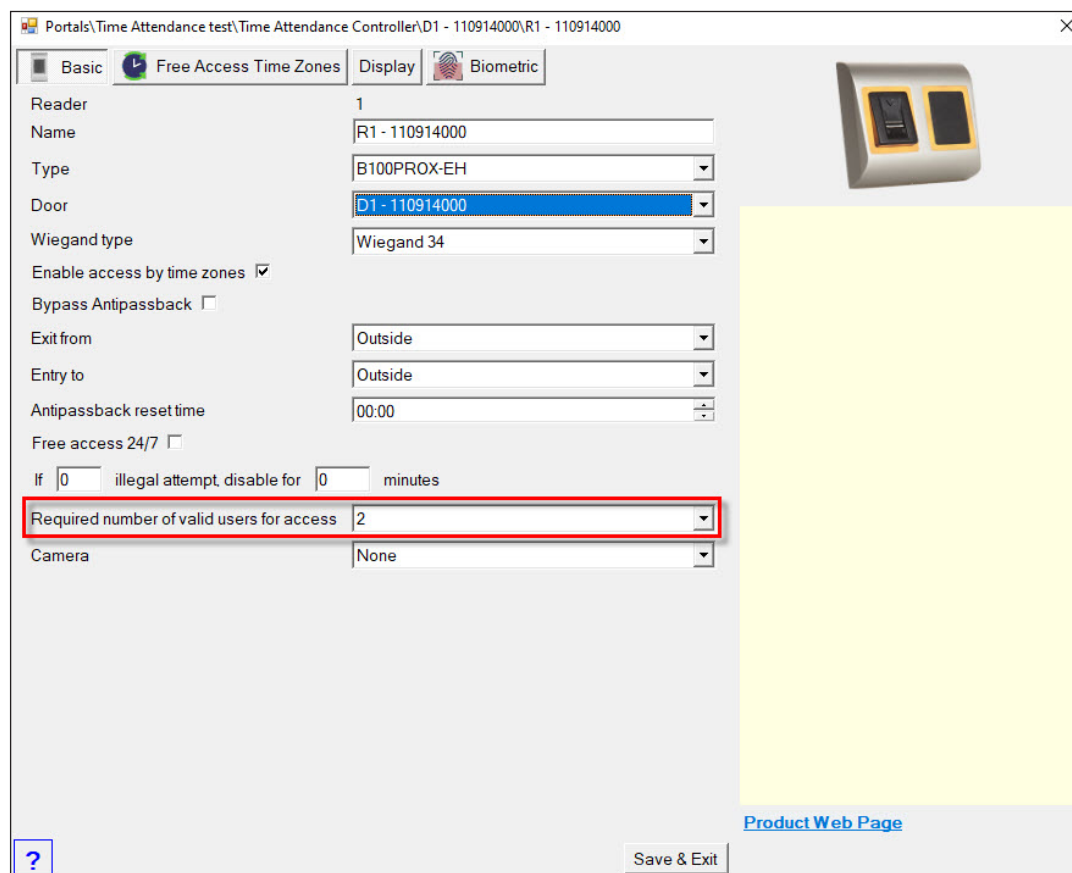
3 Technology readers connected at EWSI

A064

1. Open PROS CS.
2. Right click on the reader, and select **"Properties"**.



3. Go to **"Basic"** section and set the field **"Required number of valid users for access"** to **2**.



4. Go to “**Biometric**” section and set the “**Entry mode**” to “**Card or Finger**”.
- Click on “**Save and Exit**” at the bottom to save your changes.

Portals\Time Attendance test\Time Attendance Controller\D1 - 110914000\R1 - 110914000

Basic Free Access Time Zones Display **Biometric**

Serial 15-12-28-000

Finger Acceptance Flexibility Automatic Secure

☒ Buzzer

☐ Backlight

☒ Send this ID for unknown finger 777

**Entry mode** Card or finger

Keylength

- ☐ Variable PIN size, finish code entry with A-Button.  
(Use for Access and TA code)
- ☐ Single digit PIN (Use for TA code)
- ☒ Use system setting (Use for Access)

[Product Web Page](#)

[?](#) [Save & Exit](#)

5. Go to section “**Users**” and click on the “**New user**” tab.

PROS Client - Access Database version 43 - Client version 6.0.0.0

Program View Database Settings Biometry Run Scenario Card printing

**Users** Find User Access report Evacuation Report TA report

Users count: 15 / 19

Name Find user

ID

PROX-USB Firmware: 2.12 Update firmware

Card Type MIFARE Read Card Details Encrypt card

Basic User ID (Card number) Personal details

Personal details 2 Output control Biometry Text Log

User name Desfire User 1

Access level test

Department General

Workgroup Time Attendance Test

Valid from 14-Apr-22 00 : 00

Valid until 31-Dec-99 00 : 00

Apply Anti-pass policy ☒

Single entry user ☐ Renew access

**New user** Edit Delete user

Users Filters

Clear filters

Admin Connected to Server V.6.0.0.0 Connected clients : 1 Pending updates : 0 Full license : 2B86BD34 Stop sound

6. For the new user enter the credentials as follows:

**FINGER ID:** Any number that doesn't match with existing card or PIN;

**Real card ID:** Actual Card ID for the user;

**PIN Code:** Actual PIN code for the user used at the keypad reader.

The screenshot shows the 'PROX-USB, Firmware: 2.12' interface. At the top, there's a 'Card Type' dropdown set to 'MIFARE' and buttons for 'Read Card Details' and 'Encrypt card'. Below this are tabs for 'Basic', 'User ID (Card number)', 'Personal details', 'Personal details 2', and 'Output control'. The 'Basic' tab is active, showing a table of user details. The table has columns for 'User ID (Card number)', 'Site code', 'User code', 'Wiegand 26', and 'Type'. Four rows are visible, each representing a different user ID. Red boxes highlight the 'User ID (Card number)' and 'User code' fields for each row. A red callout box points to the 'User code' field of the first row, stating: 'FINGER ID: Any number that doesn't match with existing card or PIN'. Another red callout box points to the 'User code' field of the second row, stating: 'Real card ID'. A third red callout box points to the 'User code' field of the third row, stating: 'PIN Code'. The 'Type' column for all rows is set to 'Card'. At the bottom right, there are 'Cancel' and 'Save' buttons.

User ID (Card number)	Site code	User code	Wiegand 26	Type
604648847	9226	13711		Card
60468841	922	44649		Card
1234	0	1234		Card
0	0	0		Card

7. Open section "**Biometry**", and right click on the reader.

- On the pop-up screen click "**Enroll**" and then use your fingerprint on the biometric reader.
- You can also delete previously enrolled fingerprints by clicking "**Delete all**".

The screenshot shows the 'PROX-USB, Firmware: 2.12' interface with the 'Biometry' tab selected. The 'Basic' tab is also visible. The 'Biometry' tab shows a list of readers and a 'Select reader to Enroll, Send or Delete user' button. A red box highlights the 'Enroll' button. A red callout box points to the 'Enroll' button, stating: 'Enroll', 'Delete all', 'Write to card as F1', 'Write to card as F2'. The list of readers includes 'Time Attendance test', 'Time Attendance Controller', 'D1 - 110914000', 'R1 - 110914000', 'Time Attendance Controller 1', and 'D1 - 180305054'. The 'R1 - 110914000' reader is highlighted with a red box.

8. The keypad installed in parallel with the biometric reader should be set to “**Single wiegand**” with wiegand length matching the biometric reader. Those settings must be set at the reader menu. Recommended settings are Wiegand 34 bit.

