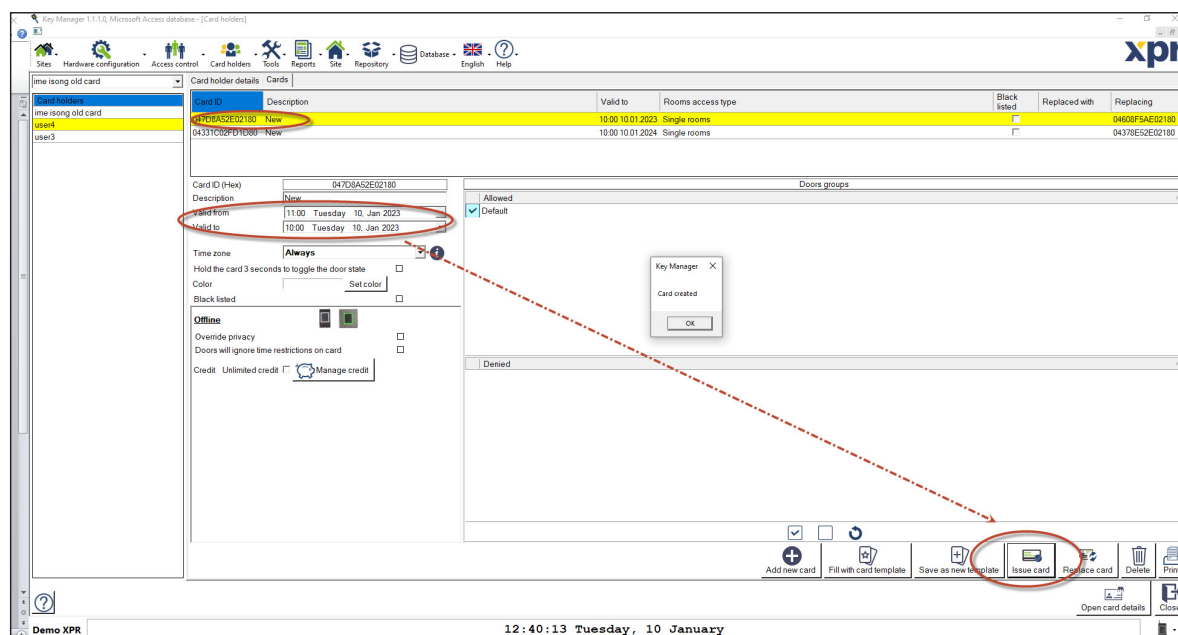


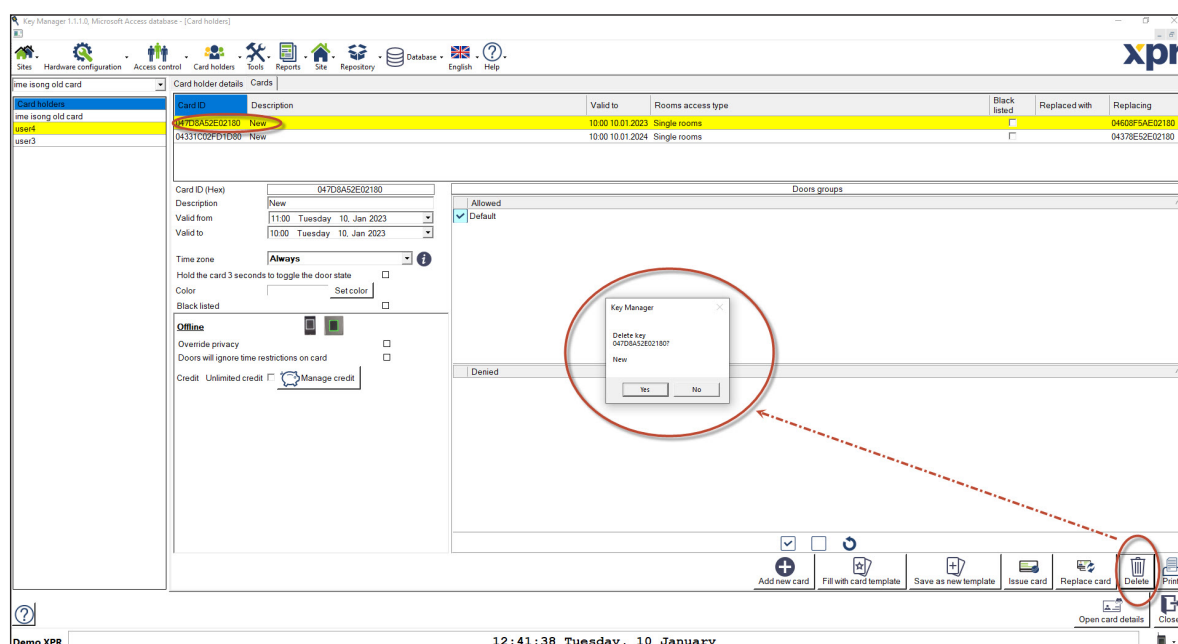
How to remove a card from the blacklist and use it again for other users

APPLICATION NOTE

- When you replace a user card, the old card is automatically blacklisted.
- If you want to delete the blacklisted card, place the blacklisted card at the desktop reader, select the **"Valid from"** and **"Valid to"** to be the same current day and time, and then click on **"Issue card"** tab. New pop up window will show with message **"Card is created"**.



- Then select the card and click on **"Delete"** tab. New window will pop up with the message **"Delete key 'xxxxxxx'?/New/Yes or No"**. Click on **"Yes"** and the card will be deleted.



- Blacklisted card will be deleted and can be re-used.
- For PXP devices replaced card does not take a place in the blacklist, but should be kept in mind that one card can be replaced 255 times. After that the last card cannot be replaced.