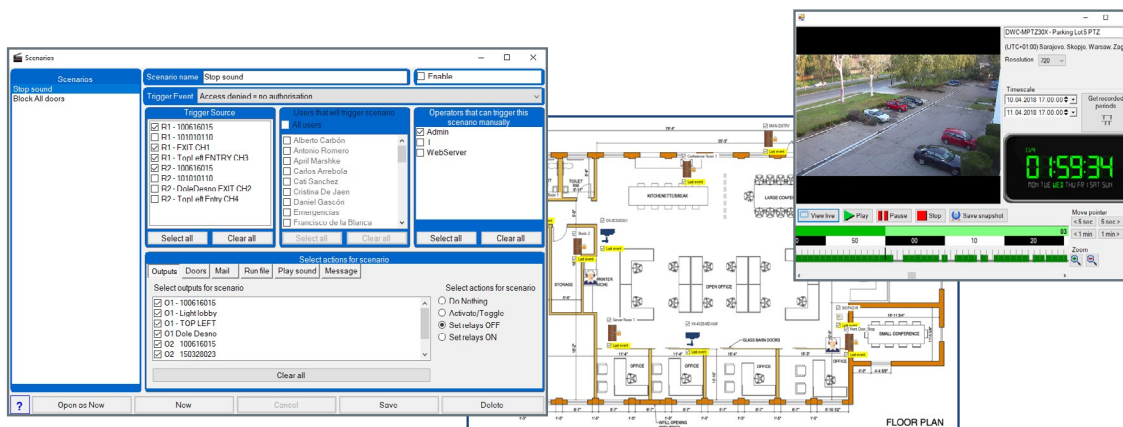


The PROS CS is a client server software for the Network Access Control System that enables multiple clients to connect to a system either locally or from anywhere on the Internet.

It can be used with an unlimited number of controllers (our EWS/i & EWS/i DR), which can be combined also with up to 4 relay boards per controller (RBO408).

Ideal to control an unlimited number of doors, users, access levels and floors in any business, office or building. It is also compatible with different video surveillance systems, allowing you to control what is occurring in real time in each area selected.

There are two options to use: the Free License and a Full License with more features available by simply plugging a USB key (our CS Key) into the PROS CS Server PC.



## FEATURES OF THE SOFTWARE

- Client-Server Software that allows up to 10 clients to be connected at the same time to the server PC
- User-Friendly windows Interface for simple programming, management and control of installations
- Unlimited number of controllers (EWS/i & EWS/i DR)
- Lift control: up to 32 floors per controller \*
- Unlimited number of Doors
- Unlimited number of Users (15000 max. per controller)
- Unlimited number of Access Levels
- Global Anti-Passback \*
- Mantrap
- Integrated fingerprint management
- Enrollment can be done from any reader in the network, or from Desktop enrolment unit
- Activation of several relays from one reader
- Remote Relays activation
- Time & Attendance \*
- 24 Time zones, 32 Holiday periods per EWS/i & EWS/i DR
- Event viewer - Real time
- Customized reports with filter for: Time, User, Department, Reader or Door.
- Create your own scenarios to collect information from events and create alarms, send mails, etc. \*
- Entry mode: Card, Finger, PIN Code, Card+PIN Code, Card+Finger, Finger+PIN Code, Finger on Card
- Sent reports by mail
- Fire Alarm, automatic printing of evacuation report
- MS Access database
- SQL database \*
- Compatible with Windows: 8, 7, Vista, Server 2008, Windows 10 and 11. Mac (with Parallels Desktop)
- Global fire alarm with automatic opening of the pre-defined doors \*
- Live Muster report
- ID card design and printing \*
- User image capture with USB camera
- Map creation, to view events on the screen for each area defined on the map.
- Video integration: compatible with Milestone, NxWitness and Digital Watchdog.
- Web report server (generate reports using Internet browser from PC, tablet or mobile) \*
- Customizable toolbars
- Integration tools for other softwares (SDK, shadow user table)
- Multilanguage: EN, FR, NL, DE, ES, IT, PT, PL, CZ, MK

\* Options available only with Full Access License (by using the CS Key, plugging it to the PROS CS Server PC).

## SOME KEY POINTS OF THE PROS CS

### • Easy display of information on main window

Top toolbar for most used operations

Hardware tree-view for easy management of the system

Events grid with sorting and filtering functions for each column, button for viewing the video recording at the time of the event

Side and bottom customizable toolbars where you can drag items for permanent state following or direct operations

Access event table for details display of the selected events

List of messages with the all the information collected from the scenarios created

- **Easy user management** with support of desktop card and fingerprint readers
- Users' fingerprints can be directly registered with the software by clicking on the Biometry button

User name: JCM Remote 4

User ID (Card number): 394419

Site code: 6

User code: 1203

Type: Remote

Access Code: 0000

Access level: Unlimited

Department: General

Workgroup: None

Valid from: 11/17/2016 00:00:00

Valid until: 12/31/2099 00:00:00

Apply Anti-pass policy: ☒

Single entry user: ☐

Buttons: Users Filters, Clear filters, Cancel, Save

Quick menu, Relay command: Quick menu of the items in the customizable toolbars for fast and frequent tasks

Select your language

- **Door menu:** Fast way to send command to the door, take report or view associated camera

Scheduled tasks: Receive automatic mails with predefined reports (\*)

Lift configuration: Expand the controller with up to 32 relays for lift control or other custom applications (\*)

Video integration: View live or recorded video from cameras, integrating the PROS CS with one of our partners solutions (Milestone, NxWitness or Digital Watchdog.)

Card designer: Make your own card designs and print the users' cards from the software (\*)

(\*) Features available only with PROS CS Full License

## TO USE WITH

EWS/I

EWS/EWSI  
EWS DR/ EWSI DR

- NEEDED -

EWS/I DR

2 Doors Network controllers with door contacts, exit button inputs and free I/O.



**RB0408**  
- OPTIONAL -  
I/O Panel Board for Lift Control.  
To connect to EWS/ EWSI controllers.



**CS LICENSE & CS KEY**  
- OPTIONAL -  
To get full access to all PROS CS options available with the Full License. To plug it in directly to the PROS CS Server PC or to use the CS LICENSE when users do not have a USB port on their PC or when used with a virtual server.



## PROS CS ACCESS MANAGEMENT SYSTEM

### PROS CS - WEBSERVER (\*)

Webserver can be installed and enabled at the same PC with Server.  
It enables PROS CS users to generate reports using web browser from PC or tablet without needing to install any software. Also if configured, any or some of the cardholders can take reports only for their own access events and T&A data.

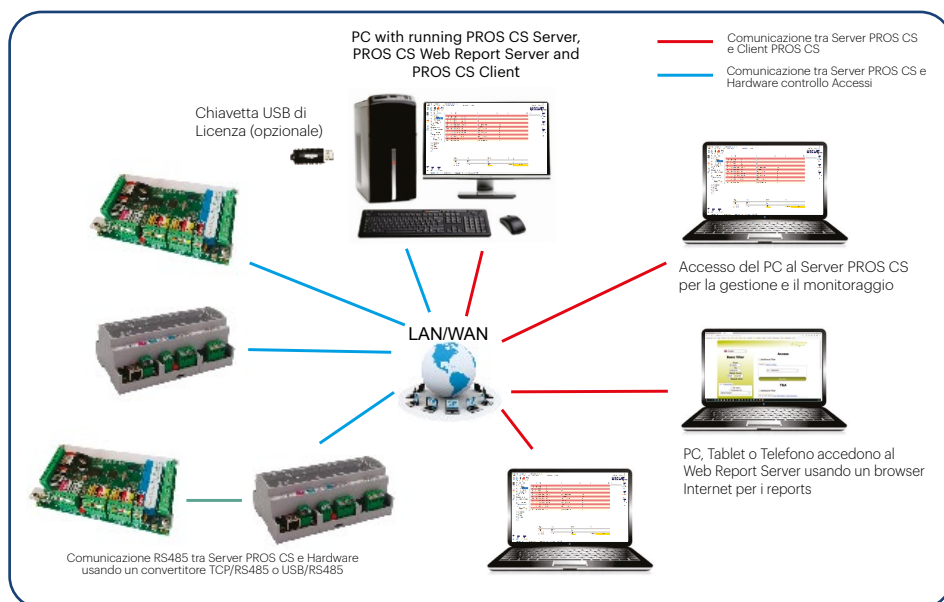
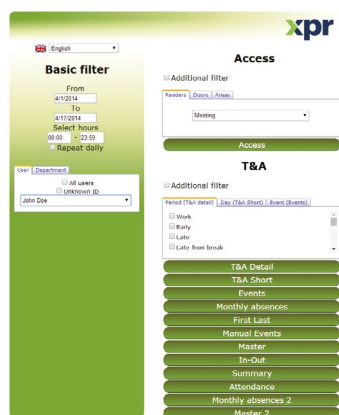
### PROS CS - CLIENT

The client can be installed on a number of PC's either local to the server or remotely via the internet. The client environment looks and feels like the PROS software allowing all features to be controlled. Client access levels can be setup to restrict users from the particular features if required.

### PROS CS - SERVER

This software would be installed on a server PC along with the client program, which will be connected to the hardware via a network connection. The server software is free and you would only need a USB dongle if you would like to get access to all the features available with the Full License.

(\*) Webserver available only with PROS CS Full License



## PROS CS LICENSE COMPARATIVE

Feature	Free	Full
PROS CS Client access from remote PC (Previous versions of PROS CS require USB license key at PROS CS Client PC)	✓	✓
MS Access database	✓	✓
SQL database	✗	✓
Users Shadow table	✗	✓
Switch or edit database type and connection	✗	✓
Global Anti-passback	✗	✓
Maps	✓	✓
Video integration	✓	✓
Customizable toolbars	✓	✓
Access levels	✓	✓
Access reports	✓	✓
System reports	✓	✓
Function cards	✓	✓
Attendance reports	✗	✓
Automatic evacuation reports	✓	✓

Feature	Free	Full
Muster report	✓	✓
Find user option	✓	✓
Web report server	✗	✓
Scheduled tasks	✗	✓
Scenarios	✗	✓
ID card design & printing	✗	✓
Global fire	✗	✓
Lift control	✗	✓
Client SDK	✓	✓
Sites	Unlimited	Unlimited
PROS CS Operators	Unlimited	Unlimited
Number of PROS CS Servers defined in the Client	Unlimited	Unlimited
Custom Wiegand configurations	✓	✓
Integrated fingerprint management	✓	✓
Import/Export Users to Excel	✓	✓

All product specifications are subject to change without notice.



Find us on [www.xprgroup.com](http://www.xprgroup.com)

We invite you to visit our website to obtain more information about our products.

PROS-CS-DS-EN-Ve2

