

APPLICATION NOTE

Web Access

Configuring the WS4 Controller for first use

C023

First connection and configuration

The WS4 Controller does not have a default IP address. By default, it is set to DHCP. There are two ways to connect and configure the WS4 Controller:

1. **LAN**
2. **Standalone method**

1. LAN (For use in a home or business LAN network)

In this configuration, the network's DHCP server will assign an IP address to your WS4 Controller.

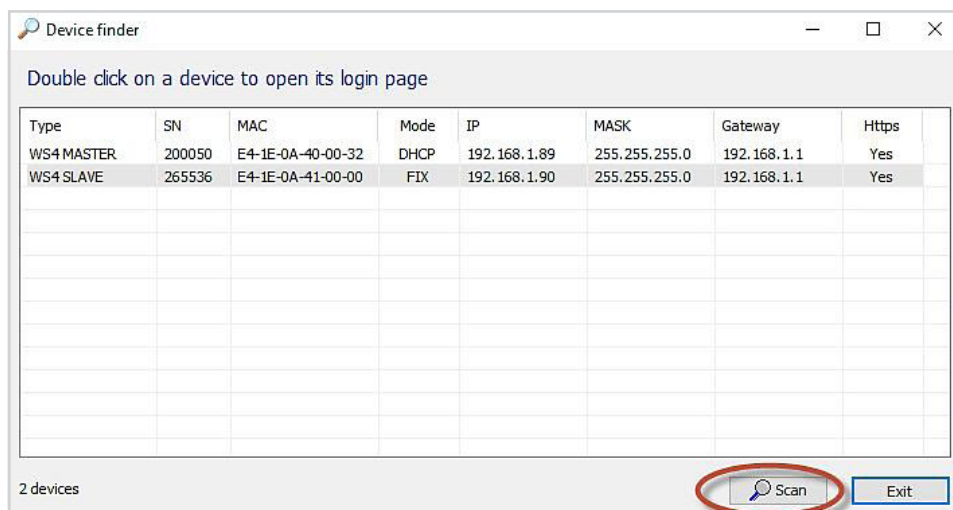
- Put the DIP switch 1 in position OFF.
- Connect a cable from your network to the ethernet connector of the WS4 Controller.
- Open a web browser and enter `http://ws4` followed by dash and the serial number of the WS4 Controller as in the picture.



If you cannot connect, it is because your network does not recognize the name of the WS4 Controller. In this case, go to our web site <http://www.xprgroup.com/products/ws4/> and download the tool called “**Device Finder**”.

The “**Device Finder**” will enable you to find out the IP address of the WS4 controller.

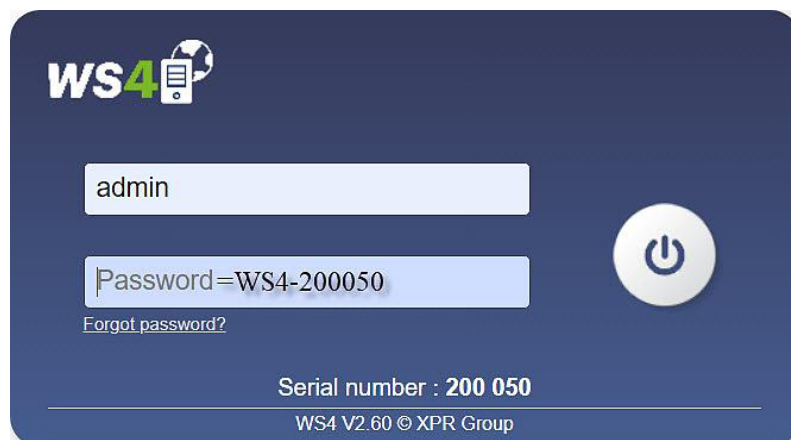
Run the “**Device Finder**” and click on “**Scan**” tab. All available WS4 Controllers connected to your network, including their IP addresses will be shown just like in the picture below.



Open a browser and type the IP address of the WS4 Controller and you will be prompted to the login page.

User Name: admin

Password: WS4 followed by Dash and the Serial Number (ex. WS4-200050) just like the image below, all in capital letters without space.



2. Standalone method (For standalone use - without LAN network)

In this configuration, the WS4 will assign an IP address to your PC. The PC must be set to obtain IP address automatically.

- a) Put the DIP switch 1 in position ON.
- b) Connect a cable from your PC directly to the ethernet connector of the WS4 Controller.
- c) Open a web browser and enter the following IP address - 192.168.50.100, and you will be prompted to the login page.



d) **User Name:** admin

e) **Password:** WS4 followed by Dash and the Serial Number (ex. WS4-200050) just like the image below, all in capital letters without space.

