

# How to replace EWS/EWSi controller in the system

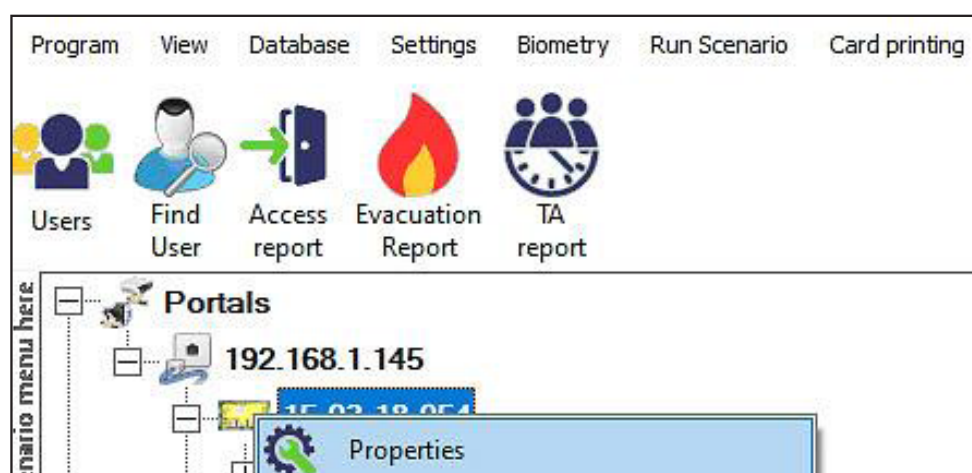
## APPLICATION NOTE

ONLine Access

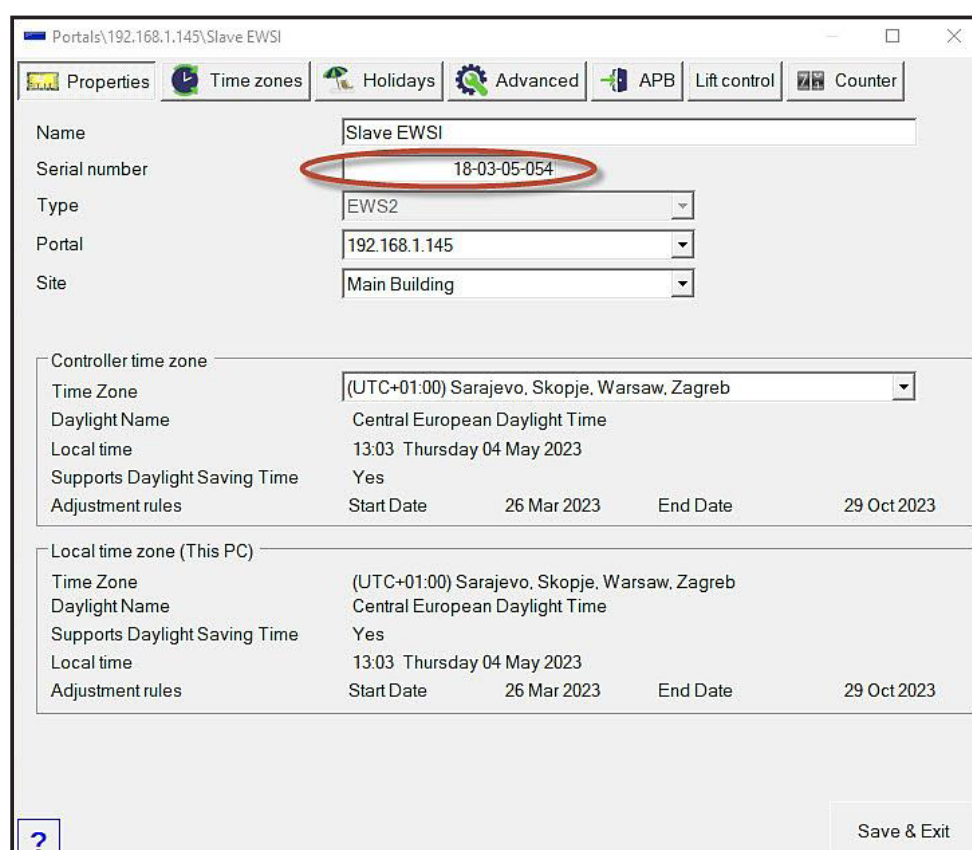
How to replace EWS/EWSi controller in the system

A068

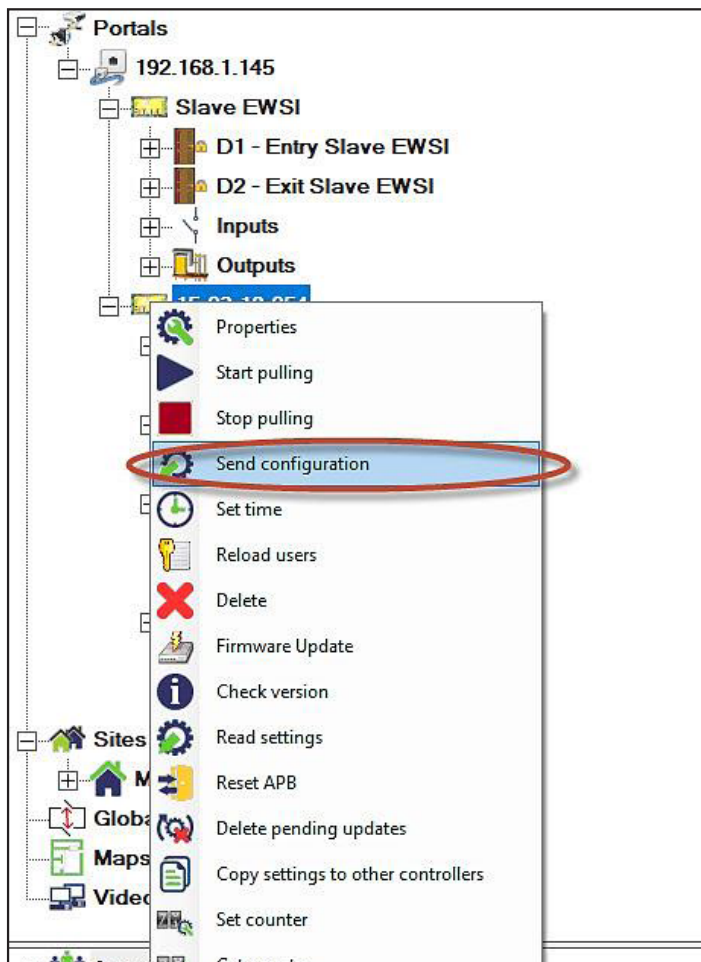
1. If the controller is connected by TCP network, setup the new controller IP address to be the same with the existing controller.
2. Dismount the existing controller and mount the new one.
3. Open PROS Client application.
4. Find the controller icon in the hardware tree view, right click on the icon and select **"Properties"**.



5. Type the serial number of the new EWSi Controller and click on **"Save & Exit"** tab.



6. Right click on the controller icon and select “**Send configuration**” to configure the controller.



7. Right click on the controller icon and select “**Reload users**” to update the controller user database.

