

APPLICATION NOTE

ONLine Access

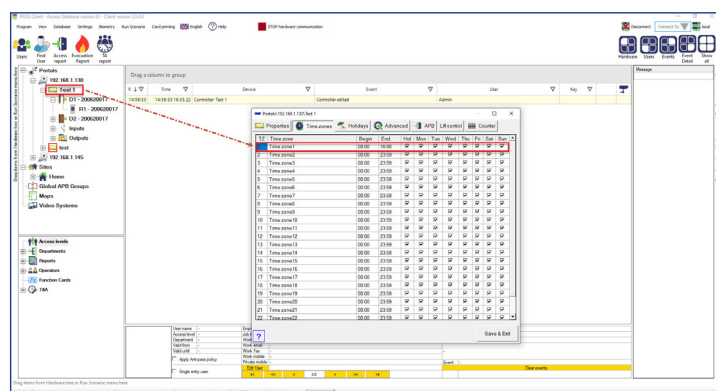
How to create access levels in PROS CS

A062

The access level determines which doors may be entered by the user, and with the help of time zones, it also defines the hours of the day and days of the week a user may enter a door at a particular access level.

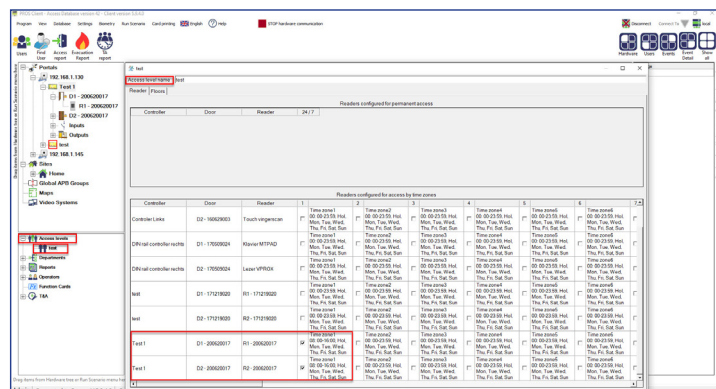
1. Open PROS CS and right click on your Controller/Properties/Time Zone

Define your Time Zone and click on "Save&Exit" Tab.



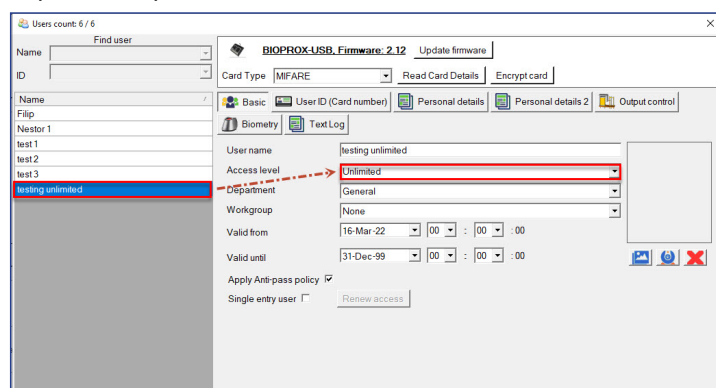
2. Go to Access level and make access level

Select Readers witch to be configured for access by Time Zone previously defined at the Controller/Time Zone and click on "Save&Exit" Tab.

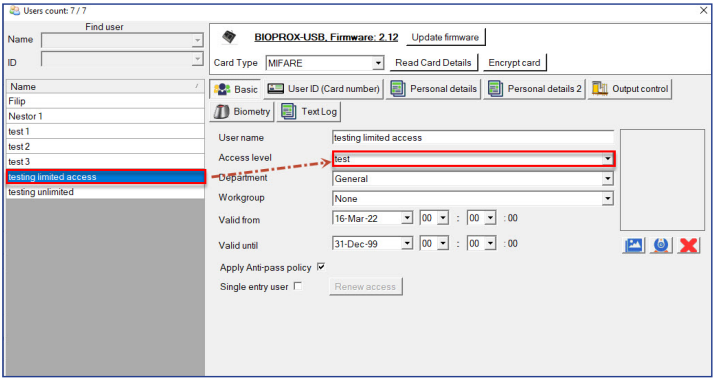


3. Go to USERS and assign the newly created access level to the desired Users

Select witch user Access Level need to be changed or create new user. Click on "Edit" Tab. Select Access Level previously defined under section "Access levels" and click on "Save" Tab.



After selecting the Access Level all users assigned to predefine Access Level will have access according to this Access Level.



After selecting the Access Level all users assigned to “Unlimited Access” level will have access to all levels.

